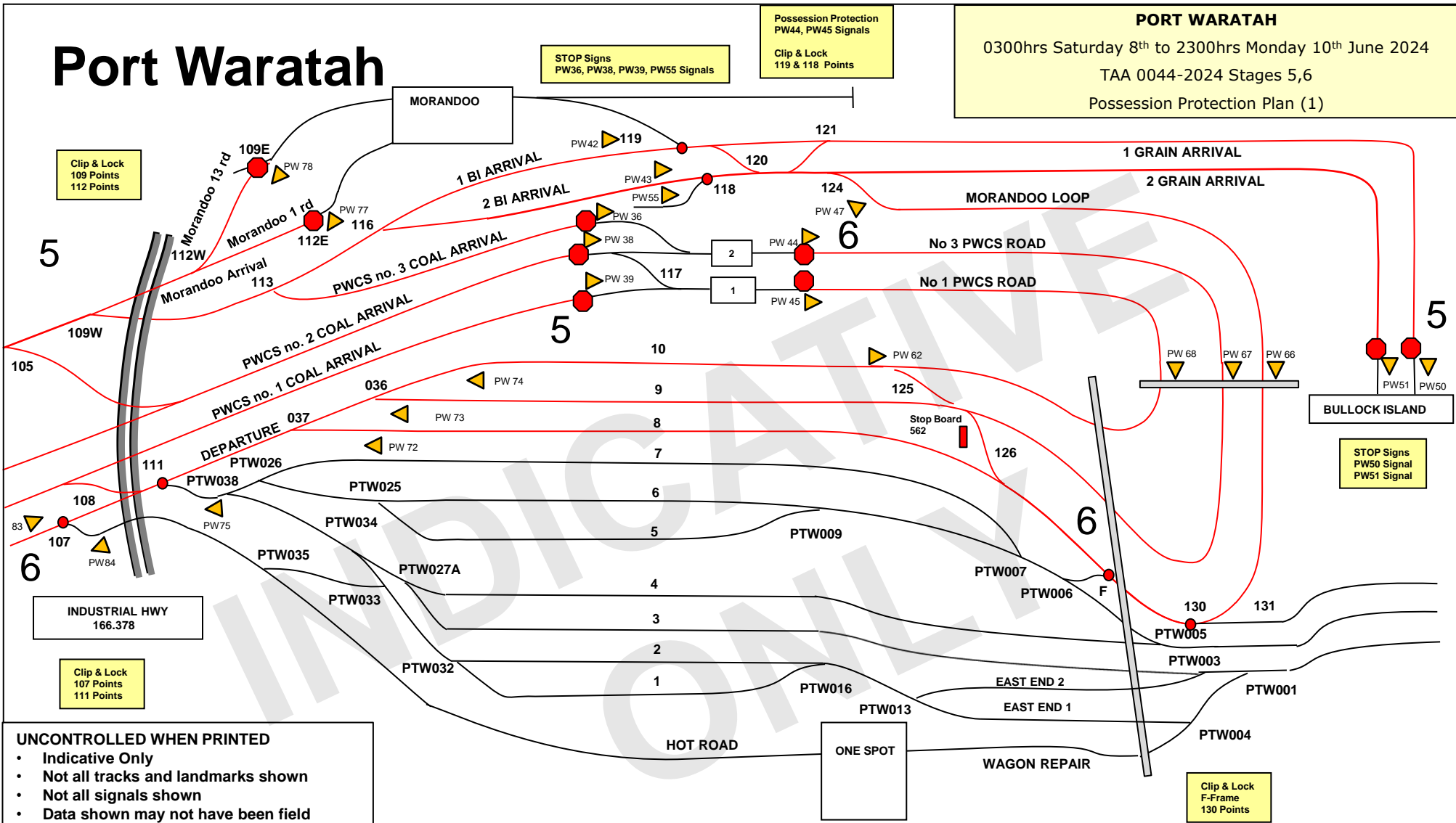


Port Waratah

PORT WARATAH
 0300hrs Saturday 8th to 2300hrs Monday 10th June 2024
 TAA 0044-2024 Stages 5,6
 Possession Protection Plan (1)



Clip & Lock
 109 Points
 112 Points

STOP Signs
 PW36, PW38, PW39, PW55 Signals

Possession Protection
 PW44, PW45 Signals
 Clip & Lock
 119 & 118 Points

STOP Signs
 PW50 Signal
 PW51 Signal

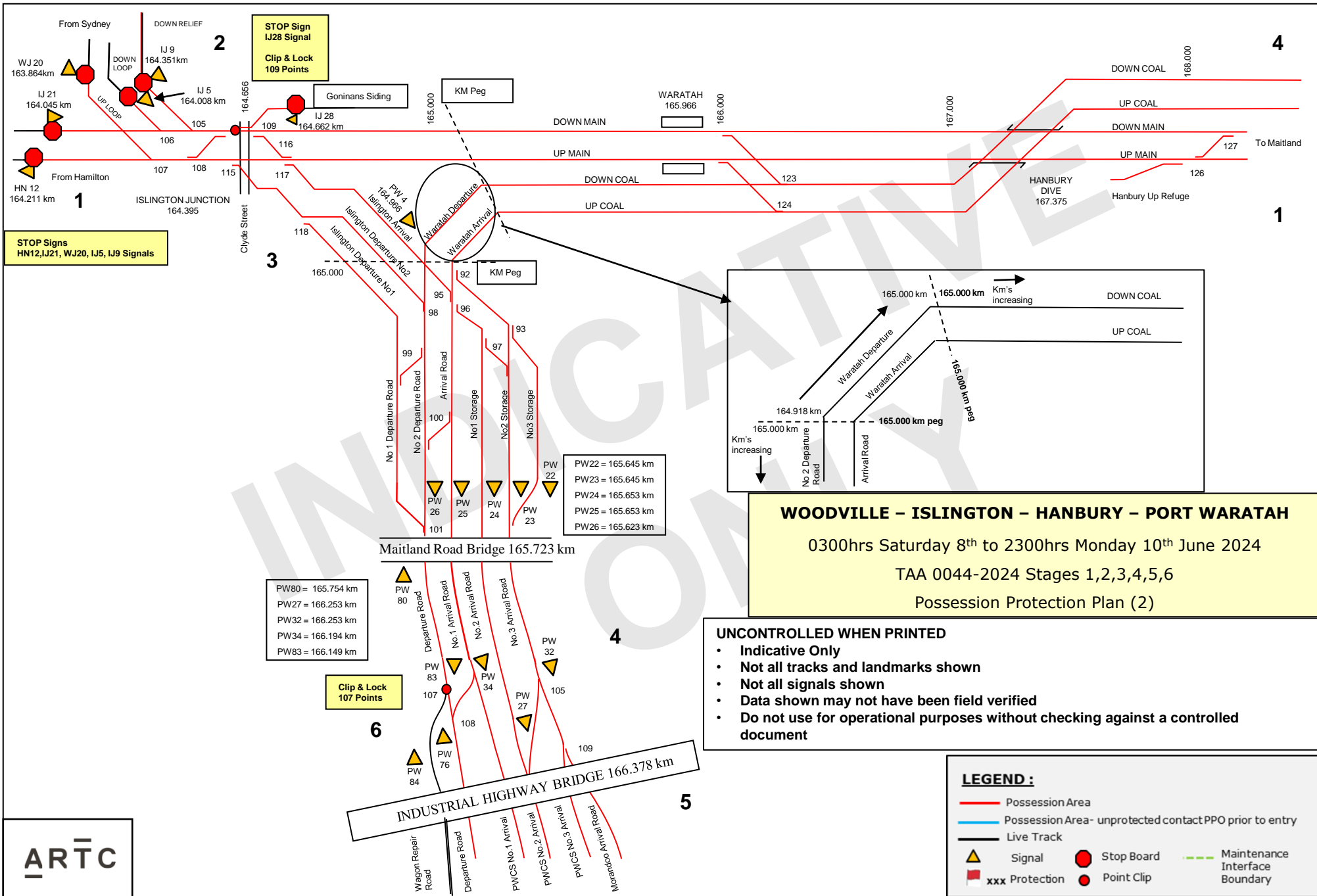
Clip & Lock
 F-Frame
 130 Points

UNCONTROLLED WHEN PRINTED

- Indicative Only
- Not all tracks and landmarks shown
- Not all signals shown
- Data shown may not have been field verified
- Do not use for operational purposes without checking against a controlled document

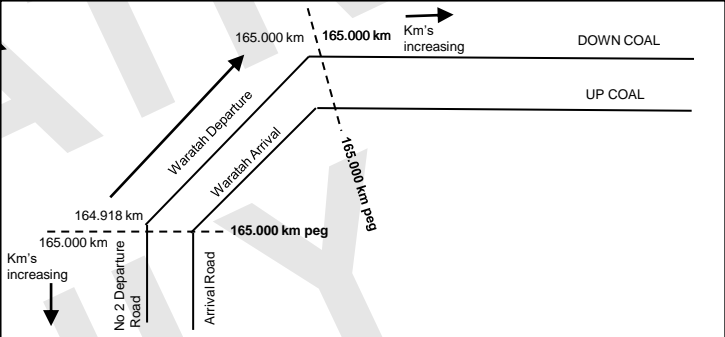
LEGEND :

- Possession Area
- Possession Area- unprotected contact PPO prior to entry
- Live Track
- ▲ Signal
- Stop Board
- xxx Protection
- Point Clip
- Maintenance Interface Boundary



STOP Sign
IJ28 Signal
Clip & Lock
109 Points

STOP Signs
HN12, IJ21, WJ20, IJ5, IJ9 Signals



WOODVILLE - ISLINGTON - HANBURY - PORT WARATAH
0300hrs Saturday 8th to 2300hrs Monday 10th June 2024
TAA 0044-2024 Stages 1,2,3,4,5,6
Possession Protection Plan (2)

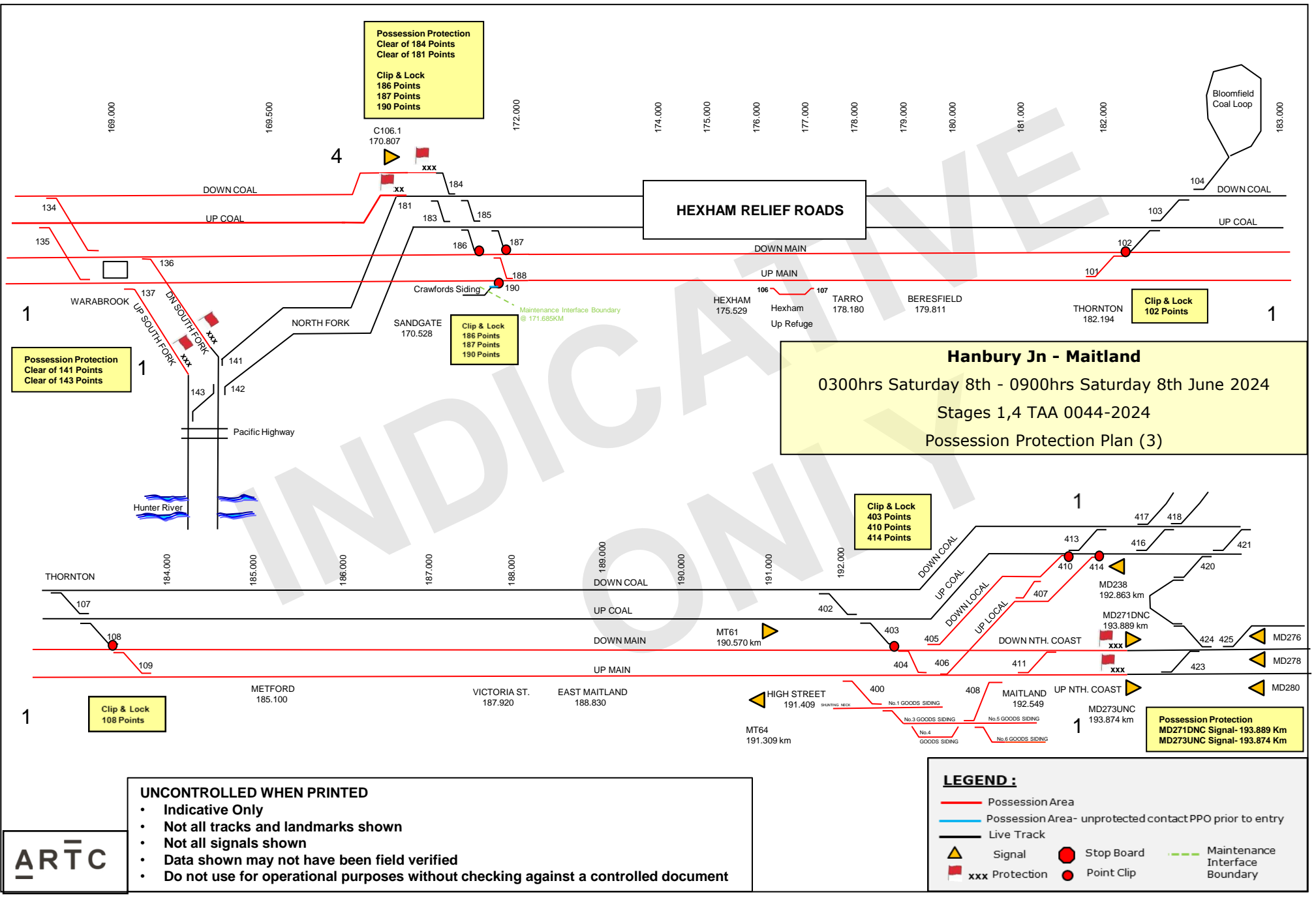
UNCONTROLLED WHEN PRINTED

- Indicative Only
- Not all tracks and landmarks shown
- Not all signals shown
- Data shown may not have been field verified
- Do not use for operational purposes without checking against a controlled document

LEGEND :

	Possession Area		Stop Board		Maintenance Interface Boundary
	Possession Area- un-protected contact PPO prior to entry		Point Clip		
	Live Track				
	Signal				
	Protection				





Possession Protection
Clear of 184 Points
Clear of 181 Points

Clip & Lock
186 Points
187 Points
190 Points

Possession Protection
Clear of 141 Points
Clear of 143 Points

Clip & Lock
186 Points
187 Points
190 Points

Clip & Lock
102 Points

Clip & Lock
403 Points
410 Points
414 Points

Possession Protection
MD271DNC Signal-193.889 Km
MD273UNC Signal-193.874 Km

Hanbury Jn - Maitland
0300hrs Saturday 8th - 0900hrs Saturday 8th June 2024
Stages 1,4 TAA 0044-2024
Possession Protection Plan (3)

UNCONTROLLED WHEN PRINTED

- Indicative Only
- Not all tracks and landmarks shown
- Not all signals shown
- Data shown may not have been field verified
- Do not use for operational purposes without checking against a controlled document



LEGEND :

- Red line: Possession Area
- Blue line: Possession Area- unprotected contact PPO prior to entry
- Black line: Live Track
- Yellow triangle: Signal
- Red circle: Stop Board
- Green dashed line: Maintenance Interface Boundary
- Red square with 'xxx': Protection
- Red circle with dot: Point Clip

Possession Protection
 Clear of 184 Points
 Clear of 181 Points

Clip & Lock
 186 Points
 187 Points
 190 Points

Possession Protection
 Clear of 141 Points
 Clear of 143 Points

Clip & Lock
 186 Points
 187 Points
 190 Points

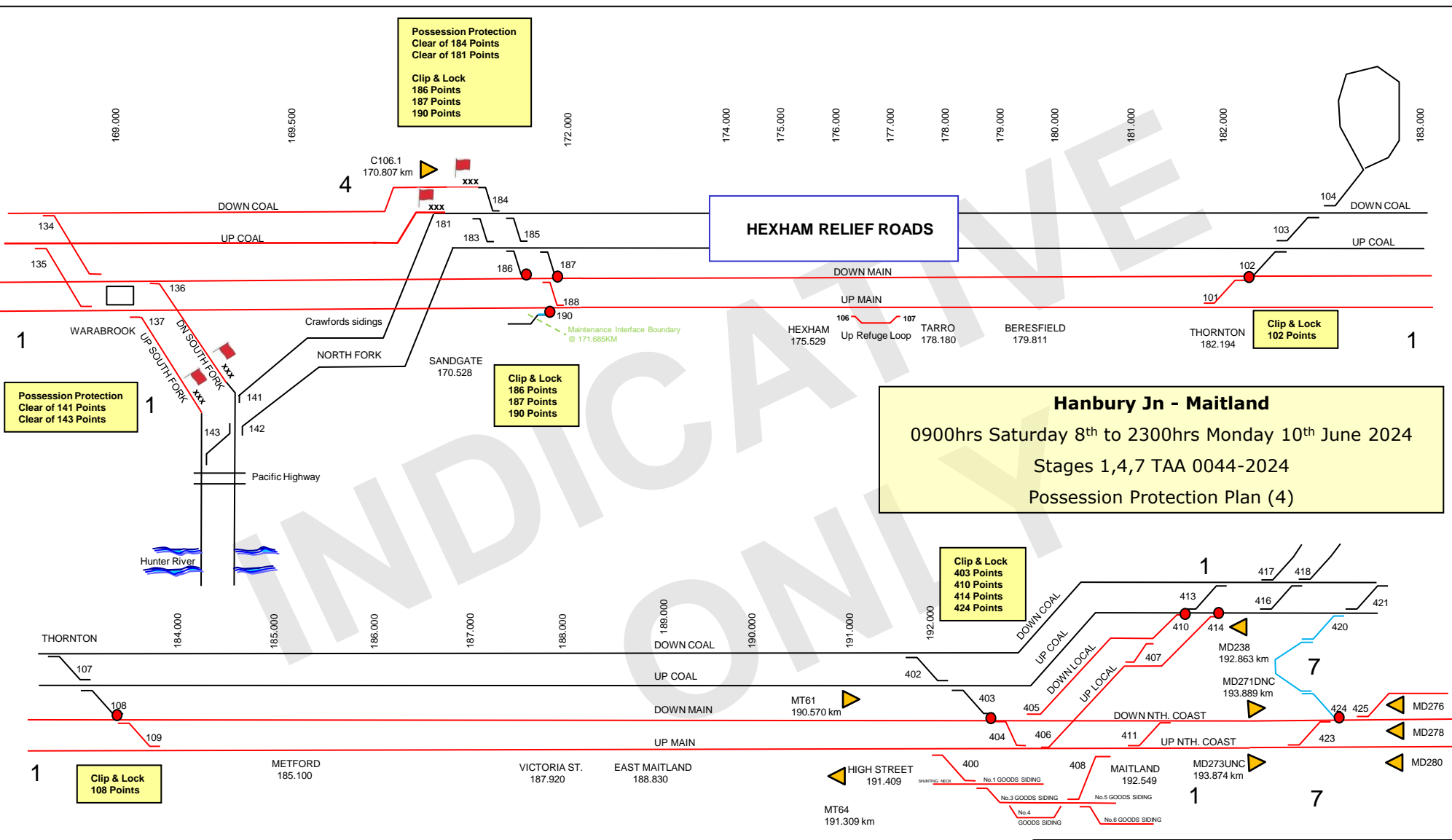
Clip & Lock
 403 Points
 410 Points
 414 Points
 424 Points

Clip & Lock
 102 Points

Hanbury Jn - Maitland
 0900hrs Saturday 8th to 2300hrs Monday 10th June 2024
 Stages 1,4,7 TAA 0044-2024
 Possession Protection Plan (4)

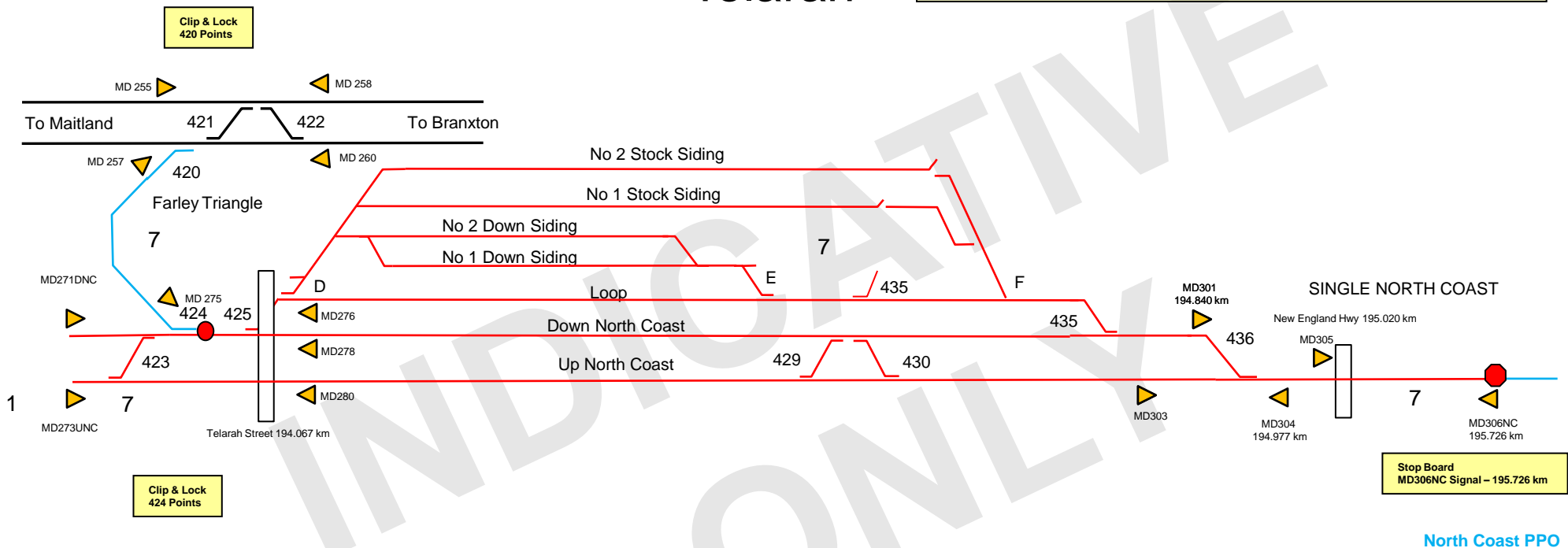
UNCONTROLLED WHEN PRINTED
 • Indicative Only
 • Not all tracks and landmarks shown
 • Not all signals shown
 • Data shown may not have been field verified
 • Do not use for operational purposes without checking against a controlled document

LEGEND :
 — Possession Area
 — Possession Area- unprotected contact PPO prior to entry
 — Live Track
 ▲ Signal
 ■ xxx Protection
 ● Stop Board
 ● Point Clip
 - - - Maintenance Interface Boundary



Telarah

Maitland - Telarah
 0900hrs Saturday 8th - 2300hrs Monday 10th June 2024
 Stage 1,7 TAA 0044-2024
 Possession Protection Plan (5)



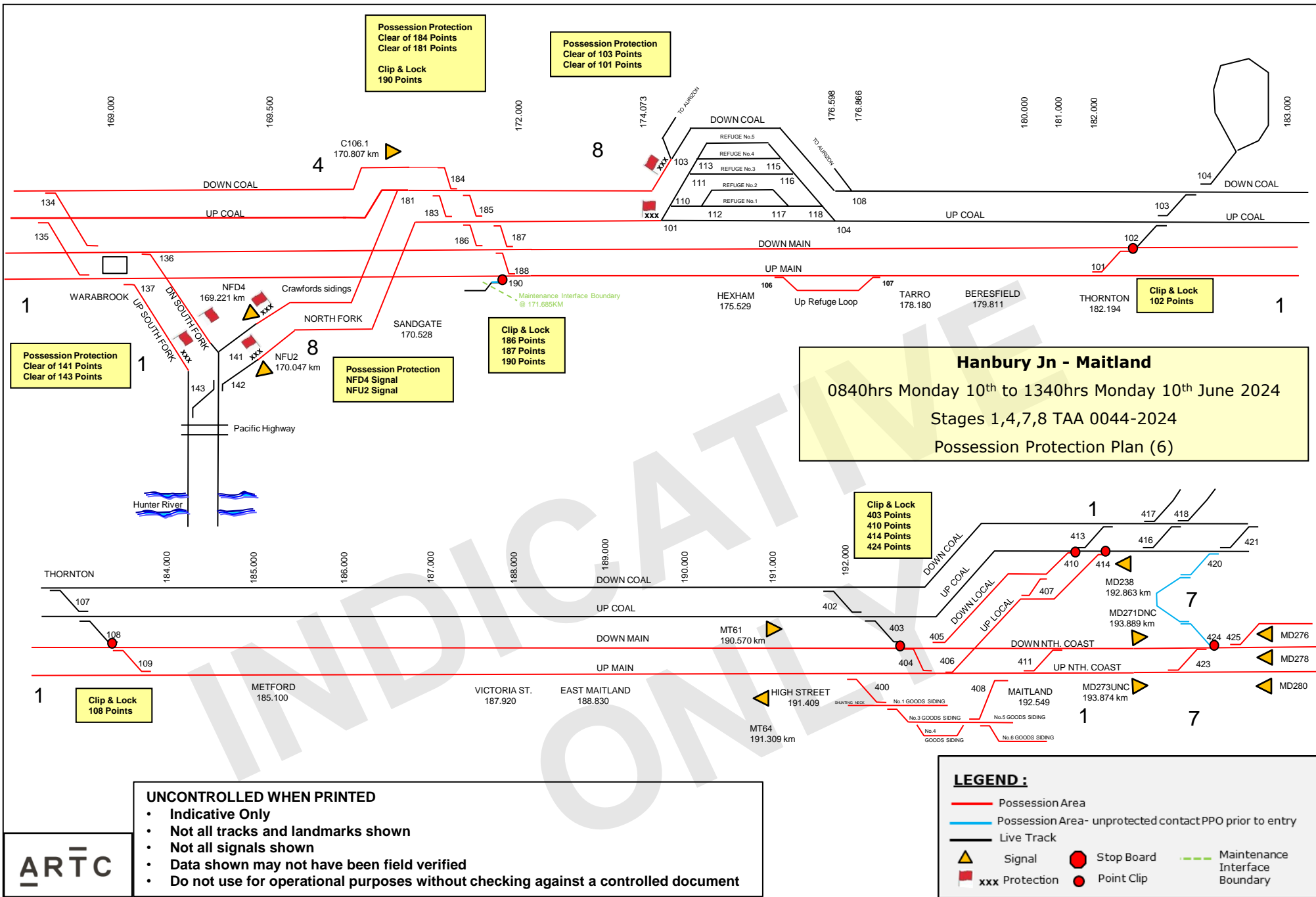
UNCONTROLLED WHEN PRINTED

- Indicative Only
- Not all tracks and landmarks shown
- Not all signals shown
- Data shown may not have been field verified
- Do not use for operational purposes without checking against a controlled document

ARTC

LEGEND :

- Possession Area
- Possession Area- unprotected contact PPO prior to entry
- Live Track
- ▲ Signal
- xxx Protection
- Stop Board
- Point Clip
- Maintenance Interface Boundary



ARTC