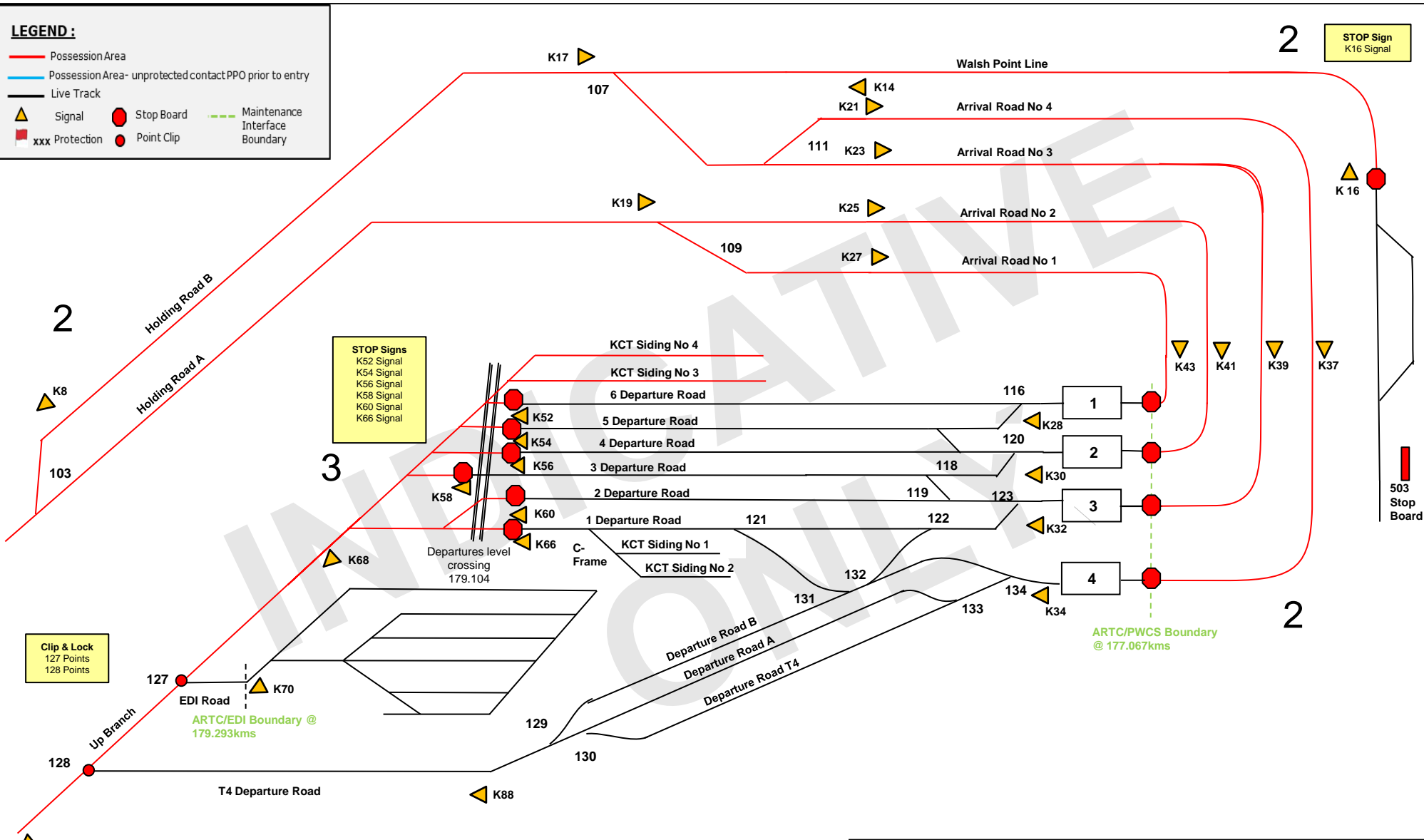


**LEGEND :**

- Possession Area
- Possession Area- unprotected contact PPO prior to entry
- Live Track
- ▲ Signal
- Stop Board
- - - Maintenance Interface Boundary
- xxx Protection
- Point Clip



**Clip & Lock**  
127 Points  
128 Points

**STOP Signs**  
K52 Signal  
K54 Signal  
K56 Signal  
K58 Signal  
K60 Signal  
K66 Signal

**STOP Sign**  
K16 Signal



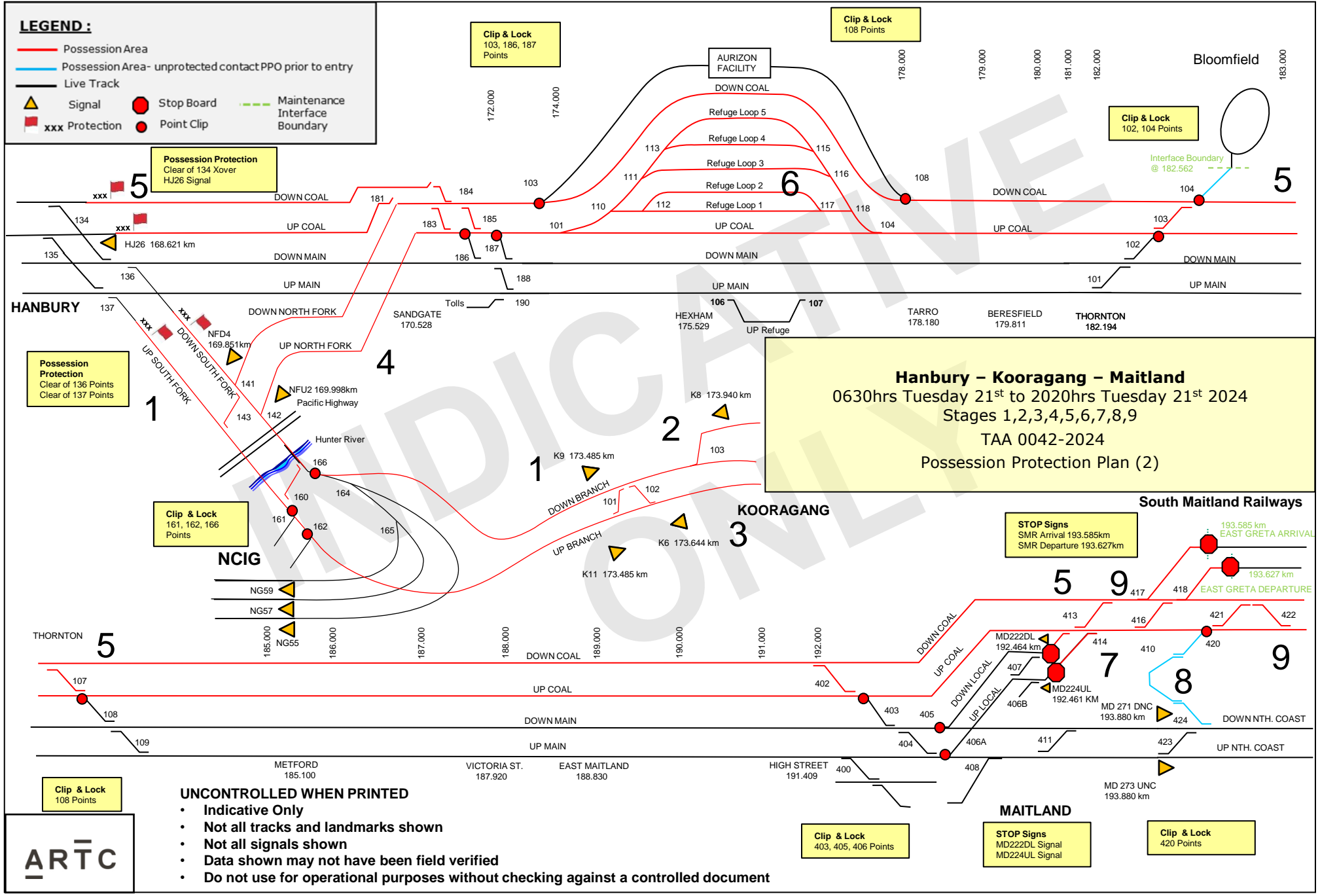
**UNCONTROLLED WHEN PRINTED**

- Indicative Only
- Not all tracks and landmarks shown
- Not all signals shown
- Data shown may not have been field verified
- Do not use for operational purposes without checking against a controlled document

**Kooragang**  
0630hrs Tuesday 21<sup>st</sup> to 0630hrs Friday 24<sup>th</sup> May 2024  
Stages 2,3  
TAA 0042-2024  
Possession Protection Plan (1)

**LEGEND :**

- Possession Area
- Possession Area - unprotected contact PPO prior to entry
- Live Track
- ▲ Signal
- Stop Board
- - - Maintenance Interface Boundary
- xxx Protection
- Point Clip



**Hanbury – Kooragang – Maitland**  
 0630hrs Tuesday 21<sup>st</sup> to 2020hrs Tuesday 21<sup>st</sup> 2024  
 Stages 1,2,3,4,5,6,7,8,9  
 TAA 0042-2024  
 Possession Protection Plan (2)

**UNCONTROLLED WHEN PRINTED**

- Indicative Only
- Not all tracks and landmarks shown
- Not all signals shown
- Data shown may not have been field verified
- Do not use for operational purposes without checking against a controlled document

**ARTC**

Clip & Lock  
108 Points

Clip & Lock  
403, 405, 406 Points

STOP Signs  
MD222DL Signal  
MD224UL Signal

Clip & Lock  
420 Points

Possession Protection  
Clear of 136 Points  
Clear of 137 Points

Possession Protection  
Clear of 134 Xover  
HJ26 Signal

Clip & Lock  
103, 186, 187  
Points

Clip & Lock  
108 Points

Clip & Lock  
102, 104 Points

STOP Signs  
SMR Arrival 193.585km  
SMR Departure 193.627km

Bloomfield  
183.000

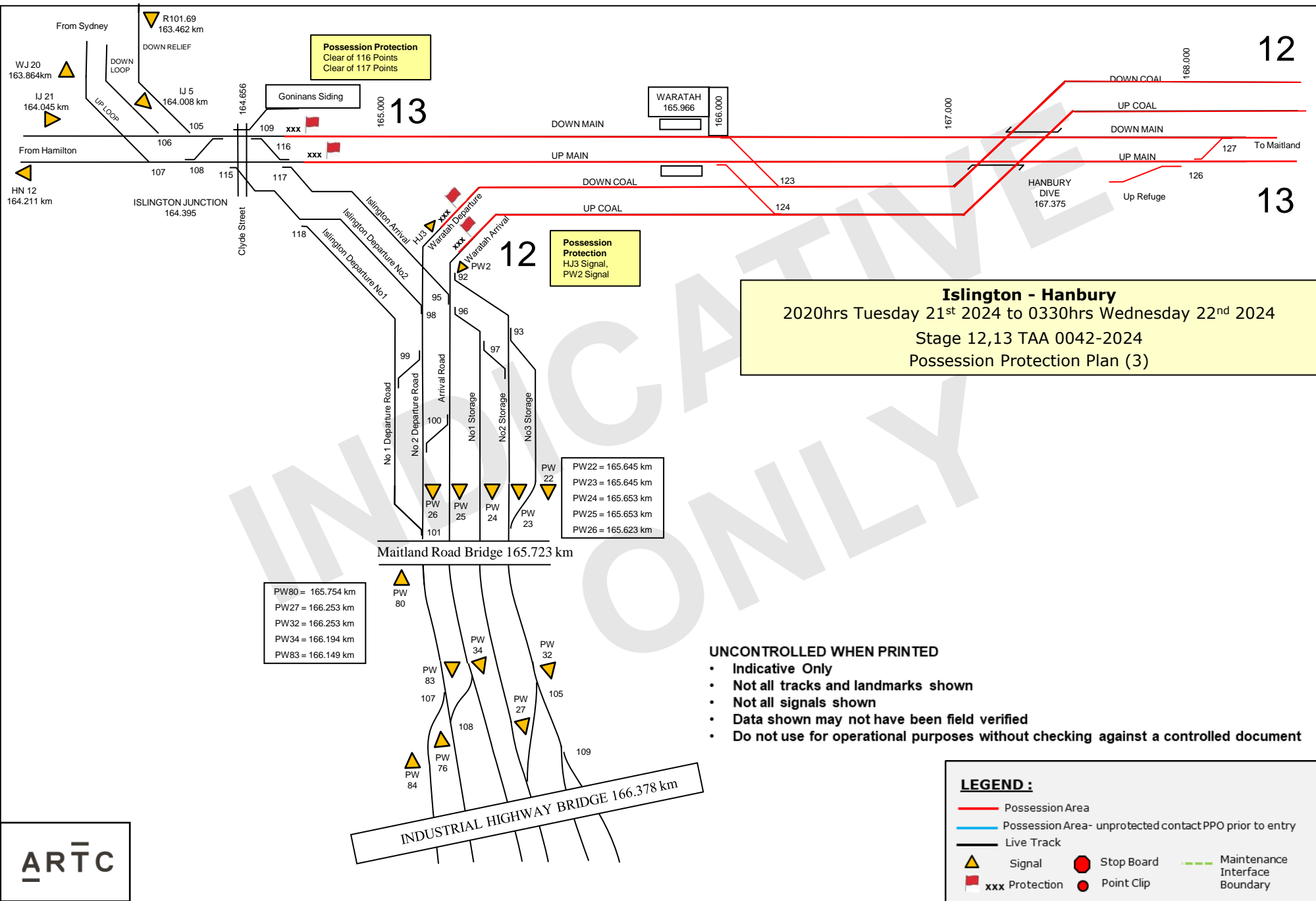
Interface Boundary  
@ 182.562

South Maitland Railways

193.585 km  
EAST GRETA ARRIVAL

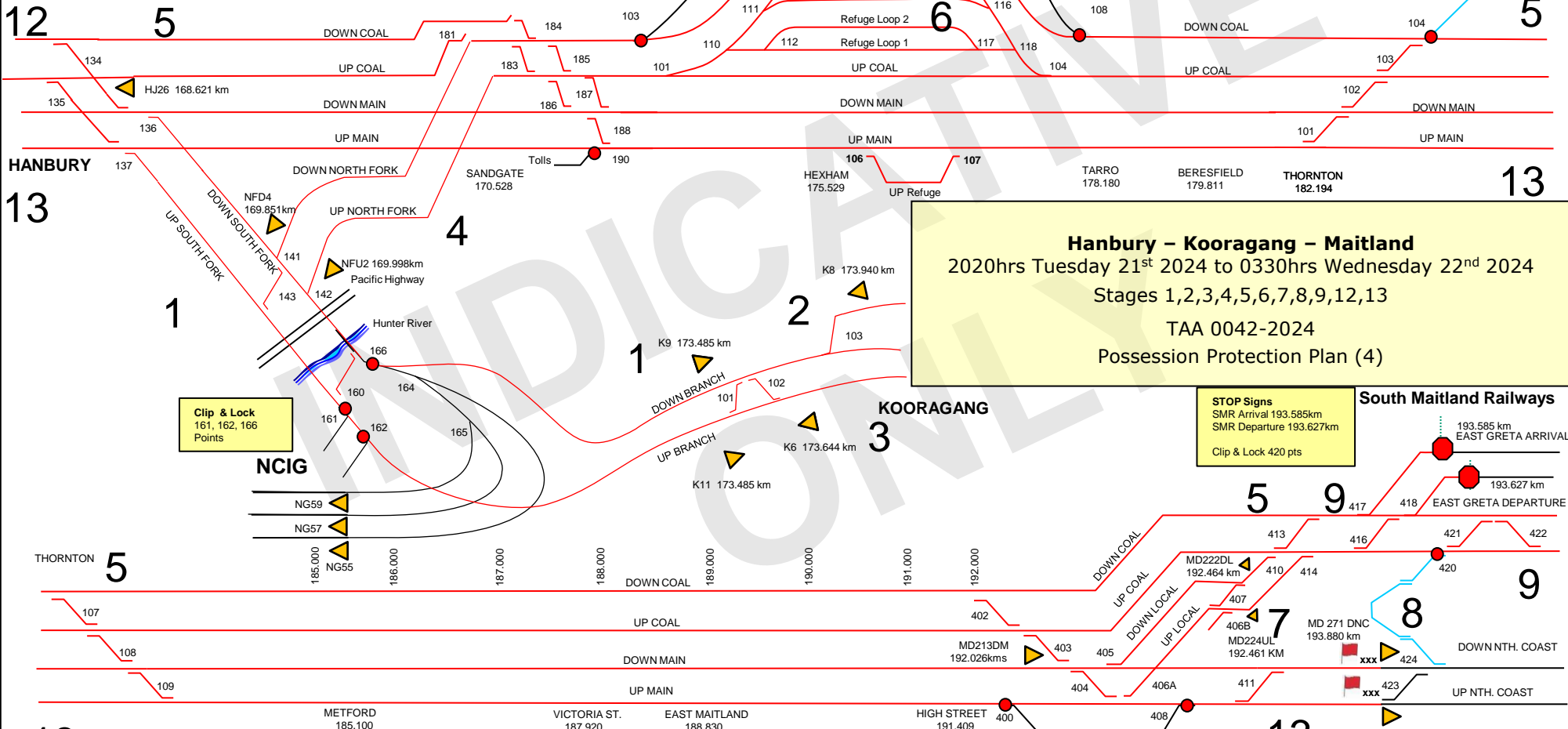
193.627 km  
EAST GRETA DEPARTURE

MD 273 UNC  
193.880 km



**LEGEND :**

- Possession Area
- Possession Area- unprotected contact PPO prior to entry
- Live Track
- ▲ Signal
- Stop Board
- - - Maintenance Interface Boundary
- xxx Protection
- Point Clip



**Hanbury – Kooragang – Maitland**  
 2020hrs Tuesday 21<sup>st</sup> 2024 to 0330hrs Wednesday 22<sup>nd</sup> 2024  
 Stages 1,2,3,4,5,6,7,8,9,12,13  
 TAA 0042-2024  
 Possession Protection Plan (4)

**STOP Signs**  
 SMR Arrival 193.585km  
 SMR Departure 193.627km  
 Clip & Lock 420 pts

**South Maitland Railways**  
 193.585 km EAST GRETA ARRIVAL  
 193.627 km EAST GRETA DEPARTURE

**Clip & Lock**  
 161, 162, 166 Points

**Clip & Lock**  
 400, 408 pts

**Possession Protection**  
 MD271DNC Signal  
 MD273UNC Signal

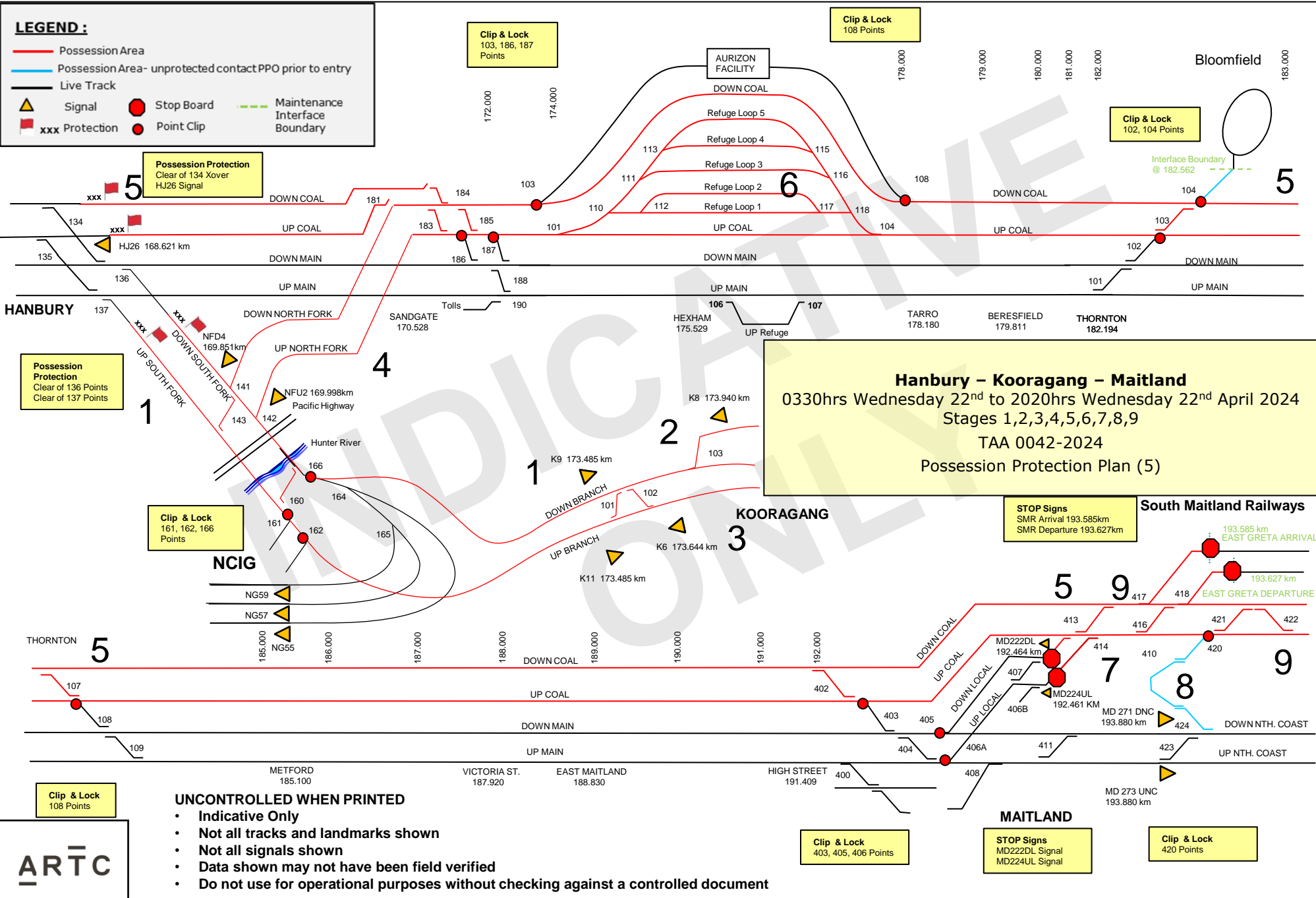
**UNCONTROLLED WHEN PRINTED**

- Indicative Only
- Not all tracks and landmarks shown
- Not all signals shown
- Data shown may not have been field verified
- Do not use for operational purposes without checking against a controlled document



**LEGEND :**

- Possession Area
- Possession Area- unprotected contact PPO prior to entry
- Live Track
- ▲ Signal
- Stop Board
- - - Maintenance Interface Boundary
- xxx Protection
- Point Clip



**Hanbury – Kooragang – Maitland**  
 0330hrs Wednesday 22<sup>nd</sup> to 2020hrs Wednesday 22<sup>nd</sup> April 2024  
 Stages 1,2,3,4,5,6,7,8,9  
 TAA 0042-2024  
 Possession Protection Plan (5)

**Possession Protection**  
 Clear of 134 Xover  
 HJ26 Signal

**Possession Protection**  
 Clear of 136 Points  
 Clear of 137 Points

**Clip & Lock**  
 161, 162, 166  
 Points

**Clip & Lock**  
 103, 186, 187  
 Points

**Clip & Lock**  
 108 Points

**Clip & Lock**  
 102, 104 Points

**STOP Signs**  
 SMR Arrival 193.585km  
 SMR Departure 193.627km

**Clip & Lock**  
 403, 405, 406 Points

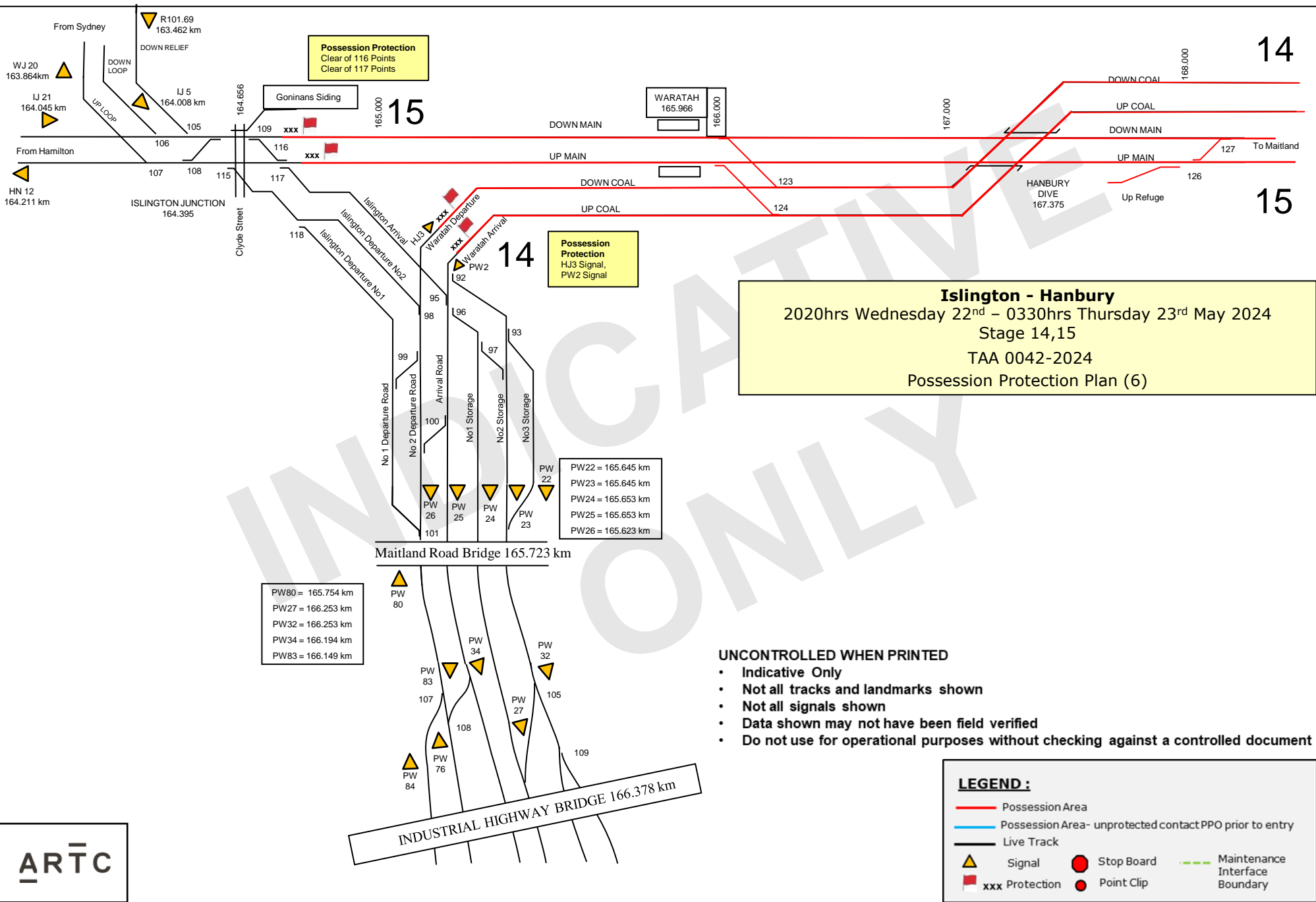
**STOP Signs**  
 MD222DL Signal  
 MD224UL Signal

**Clip & Lock**  
 420 Points

**UNCONTROLLED WHEN PRINTED**

- Indicative Only
- Not all tracks and landmarks shown
- Not all signals shown
- Data shown may not have been field verified
- Do not use for operational purposes without checking against a controlled document





**Possession Protection**  
Clear of 116 Points  
Clear of 117 Points

**Possession Protection**  
HJ3 Signal,  
PW2 Signal

**Islington - Hanbury**  
2020hrs Wednesday 22<sup>nd</sup> – 0330hrs Thursday 23<sup>rd</sup> May 2024  
Stage 14,15  
TAA 0042-2024  
Possession Protection Plan (6)

PW80 = 165.754 km  
PW27 = 166.253 km  
PW32 = 166.253 km  
PW34 = 166.194 km  
PW83 = 166.149 km

PW22 = 165.645 km  
PW23 = 165.645 km  
PW24 = 165.653 km  
PW25 = 165.653 km  
PW26 = 165.623 km

**UNCONTROLLED WHEN PRINTED**

- Indicative Only
- Not all tracks and landmarks shown
- Not all signals shown
- Data shown may not have been field verified
- Do not use for operational purposes without checking against a controlled document

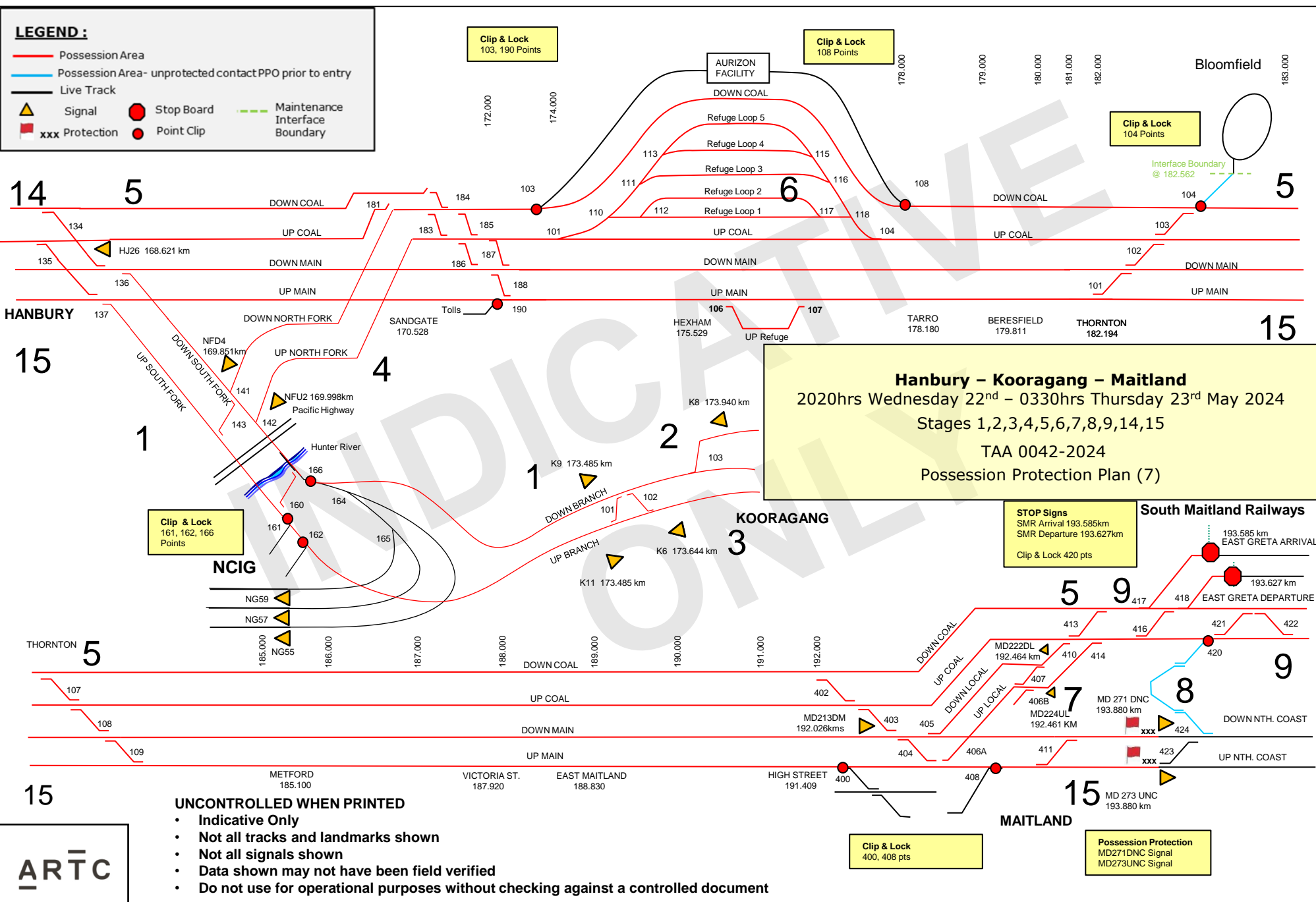
**LEGEND :**

- Possession Area
- Possession Area- unprotected contact PPO prior to entry
- Live Track
- ▲ Signal
- xxx Protection
- Stop Board
- Point Clip
- Maintenance Interface Boundary



**LEGEND :**

- Possession Area
- Possession Area- unprotected contact PPO prior to entry
- Live Track
- ▲ Signal
- Stop Board
- - - Maintenance Interface Boundary
- xxx Protection
- Point Clip



**Hanbury - Kooragang - Maitland**  
 2020hrs Wednesday 22<sup>nd</sup> - 0330hrs Thursday 23<sup>rd</sup> May 2024  
 Stages 1,2,3,4,5,6,7,8,9,14,15  
 TAA 0042-2024  
 Possession Protection Plan (7)

**STOP Signs**  
 SMR Arrival 193.585km  
 SMR Departure 193.627km  
 Clip & Lock 420 pts

**South Maitland Railways**  
 193.585 km EAST GRETA ARRIVAL  
 193.627 km EAST GRETA DEPARTURE

**Clip & Lock**  
 161, 162, 166  
 Points

**Clip & Lock**  
 400, 408 pts

**Possession Protection**  
 MD271DNC Signal  
 MD273UNC Signal

**UNCONTROLLED WHEN PRINTED**

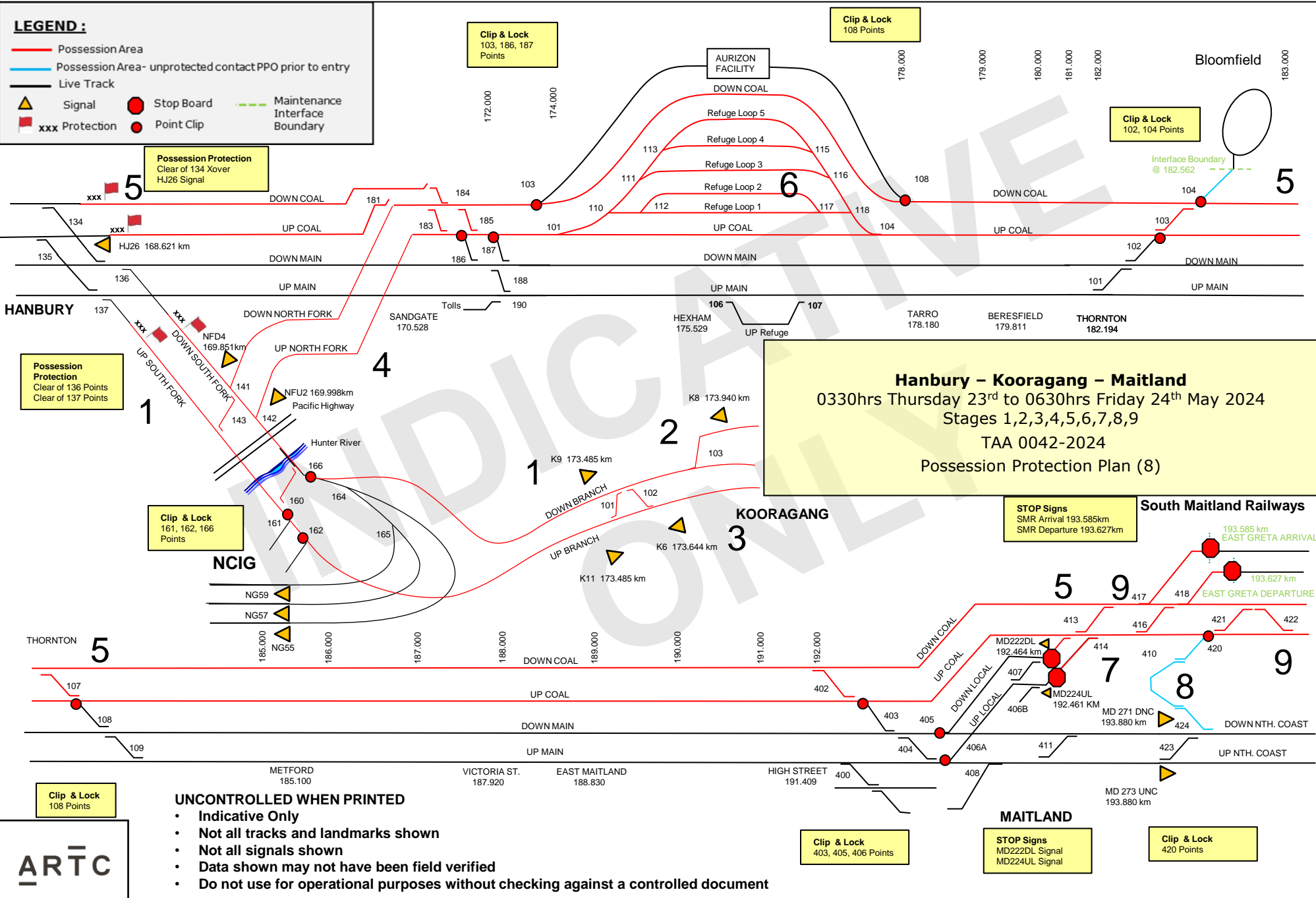
- Indicative Only
- Not all tracks and landmarks shown
- Not all signals shown
- Data shown may not have been field verified
- Do not use for operational purposes without checking against a controlled document





**LEGEND :**

- Possession Area
- Possession Area- unprotected contact PPO prior to entry
- Live Track
- ▲ Signal
- Stop Board
- - - Maintenance Interface Boundary
- xxx Protection
- Point Clip



**Hanbury - Kooragang - Maitland**  
 0330hrs Thursday 23<sup>rd</sup> to 0630hrs Friday 24<sup>th</sup> May 2024  
 Stages 1,2,3,4,5,6,7,8,9  
 TAA 0042-2024  
 Possession Protection Plan (8)

**UNCONTROLLED WHEN PRINTED**

- Indicative Only
- Not all tracks and landmarks shown
- Not all signals shown
- Data shown may not have been field verified
- Do not use for operational purposes without checking against a controlled document



Clip & Lock  
108 Points

Clip & Lock  
403, 405, 406 Points

STOP Signs  
MD222DL Signal  
MD224UL Signal

Clip & Lock  
420 Points

STOP Signs  
SMR Arrival 193.585km  
SMR Departure 193.627km

Possession Protection  
Clear of 136 Points  
Clear of 137 Points

Possession Protection  
Clear of 134 Xover  
HJ26 Signal

Clip & Lock  
102, 104 Points

Interface Boundary  
@ 182.562

Clip & Lock  
161, 162, 166  
Points

South Maitland Railways

193.585 km  
EAST GRETA ARRIVAL

193.627 km  
EAST GRETA DEPARTURE

METTFORD  
185.100

VICTORIA ST.  
187.920

EAST MAITLAND  
188.830

HIGH STREET  
191.409

MD 273 UNC  
193.880 km

MAITLAND

HANBURY

KOORAGANG

Bloomfield

AURIZON FACILITY

DOWN COAL

Refuge Loop 5

Refuge Loop 4

Refuge Loop 3

Refuge Loop 2

Refuge Loop 1

UP COAL

DOWN MAIN

UP MAIN

UP REFUGE

TARRO

BERESFIELD

THORNTON

SANDGATE

HEXHAM

K9

K8

K6

K11

MD222DL

MD224UL

MD 271 DNC

MD 273 UNC

MD 406B

MD 406A

MD 408

MD 411

MD 423

MD 424

MD 421

MD 410

MD 416

MD 417

MD 418

MD 419

MD 420

MD 421

MD 422

MD 423

MD 424

MD 425

MD 426

MD 427

MD 428

MD 429

MD 430

MD 431

MD 432

MD 433

MD 434

MD 435

MD 436

MD 437

MD 438

MD 439

MD 440

MD 441

MD 442

MD 443

MD 444

MD 445

MD 446

MD 447

MD 448

MD 449

MD 450

MD 451

MD 452

MD 453

MD 454

MD 455

MD 456

MD 457

MD 458

MD 459

MD 460

MD 461

MD 462

MD 463

MD 464

MD 465

MD 466

MD 467

MD 468

MD 469

MD 470

MD 471

MD 472

MD 473

MD 474

MD 475

MD 476

MD 477

MD 478

MD 479

MD 480

MD 481

MD 482

MD 483

MD 484

MD 485

MD 486

MD 487

MD 488

MD 489

MD 490

MD 491

MD 492

MD 493

MD 494

MD 495

MD 496

MD 497

MD 498

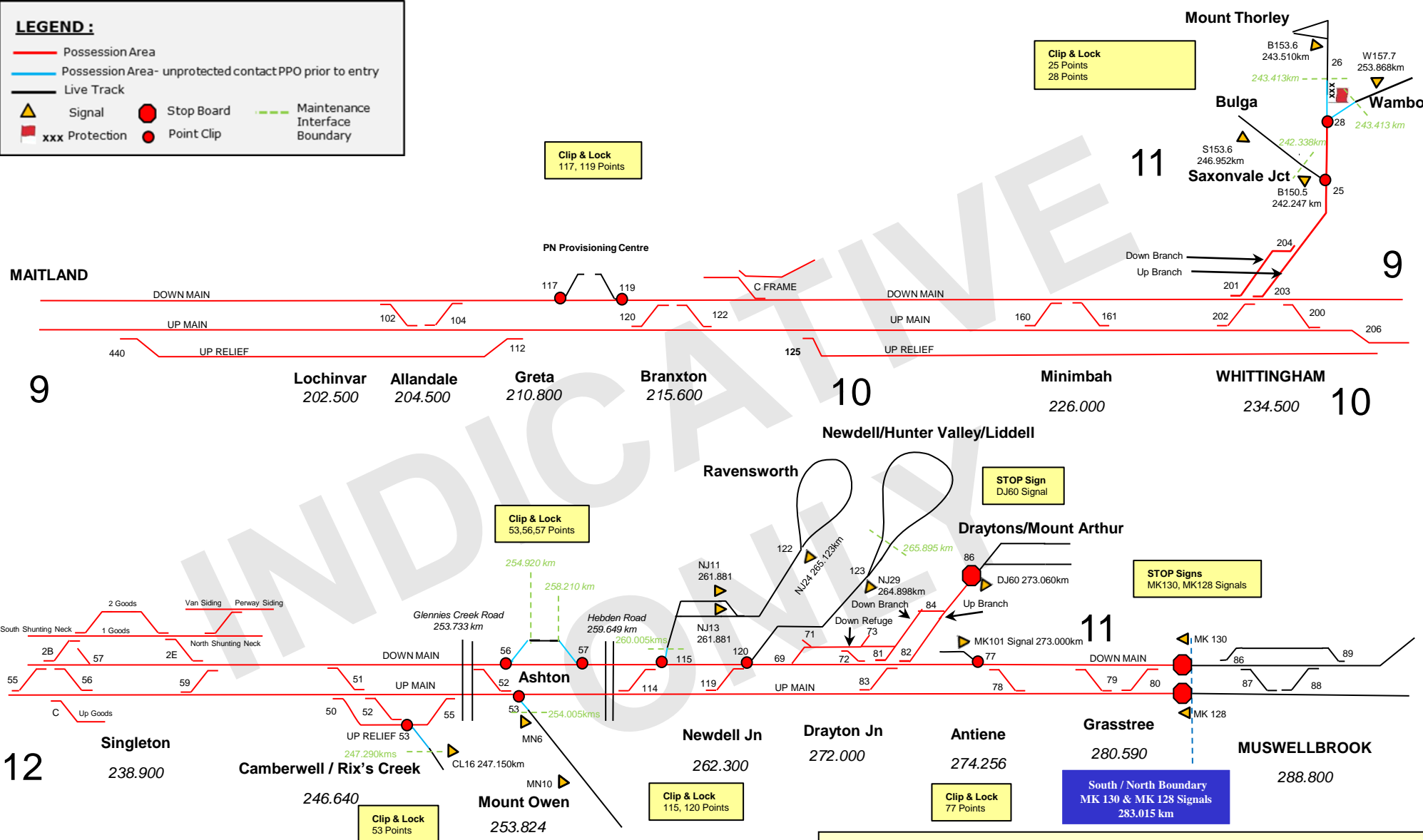
MD 499

MD 500



**LEGEND :**

- Possession Area
- Possession Area- unprotected contact PPO prior to entry
- Live Track
- ▲ Signal
- Stop Board
- - - Maintenance Interface Boundary
- xxx Protection
- Point Clip



**UNCONTROLLED WHEN PRINTED**

- Indicative Only
- Not all tracks and landmarks shown
- Not all signals shown
- Data shown may not have been field verified
- Do not use for operational purposes without checking against a controlled document



**Maitland – Muswellbrook, Whittingham – Mt Thorley**  
 0630hrs Tuesday 21<sup>st</sup> to 0630hrs Friday 24<sup>th</sup> May 2024  
 Stages 9, 10, 11  
 TAA 0042-2024  
 Possession Protection Plan (11)