

## MOUNT MURRAY ACCESS REINSTATEMENT WORKS DECEMBER 2021

Starting from 7:00am Monday, 13 December

### Access reinstatement works

Australian Rail Track Corporation (ARTC) will be carrying out scheduled access reinstatement works in **Mount Murray NSW from 7:00am to 5:00pm daily between Monday 13 December and Thursday 23 December 2021**. There are no night works planned for this project.

The work is essential for the safe operation of the network and will include minor earthworks, clearing of drainage, and some vegetation removal which has been reviewed by a qualified ecologist.

### How could this work affect you?

It will be noisy at times, and some dust may be generated. Please be assured that we will implement measures to manage and minimise these impacts on the community where possible.

The work will involve the use of machinery, vehicles and plant which will generate some noise. We will turn off machinery when not in use, arrange work in stages and/or phase the equipment used at one time to reduce noise impacts where possible.

The movement of materials and machinery on site may result in the generation of dust. We will take practical measures to reduce the amount of dust produced by our works where possible, however we recommend keeping windows and doors closed during the work. Please be aware that unforeseen high wind gusts may impede our ability to reduce overall dust levels.

We apologise for any disruption or inconvenience caused and thank you for your ongoing patience and understanding while these essential works are taking place.

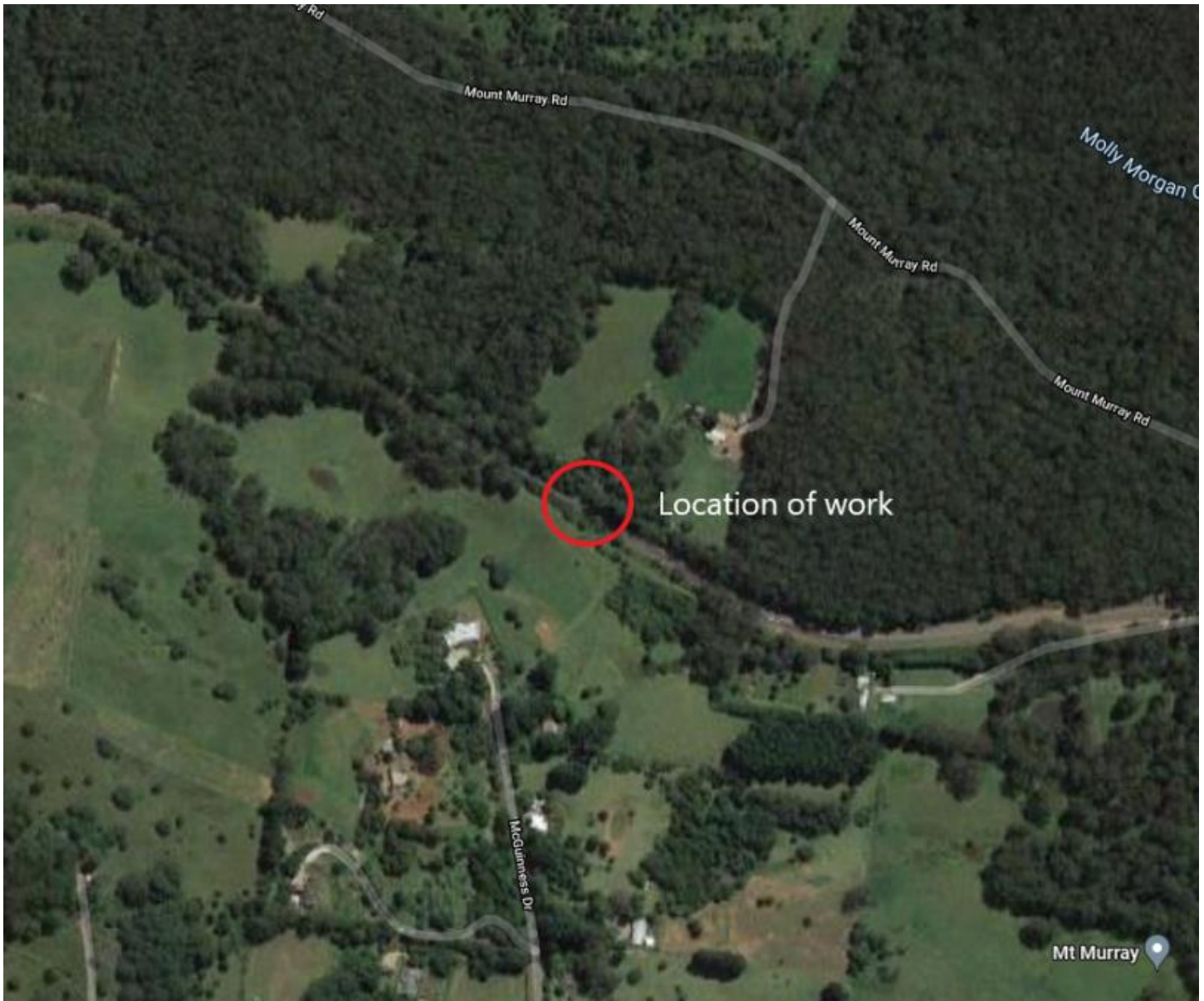
For information on our planned work please scan the below QR code with your smartphone or QR code reader.

#### WANT TO KNOW MORE?

ARTC is committed to working with landowners, communities, state and local government agencies as a vital part of our planning and consultation work, and we value your input. If you have any questions or comments, please let us know.

1300 550 402  
enviroline@ARTC.com.au  
artc.com.au





## WANT TO KNOW MORE?

ARTC is committed to working with landowners, communities, state and local government agencies as a vital part of our planning and consultation work, and we value your input. If you have any questions or comments, please let us know.

1300 550 402  
enviroline@ARTC.com.au  
artc.com.au

