

Saturday 12 March - Monday 14 March 2022

Upcoming rail works in your area

Australian Rail Track Corporation (ARTC) will be carrying out essential track maintenance and improvement works at various locations between **Cootamundra and Red Bend NSW** commencing **Saturday 12 March** and continuing through to **Monday 14 March 2022** between the hours of **6:00am and 6:00pm daily**.

We will begin mobilising to site and carrying out minor preparation work in the weeks prior to the shutdown work commencing. Site clean-up will commence in the days following the shutdown and will be completed during standard construction hours.

How could this work affect you?

There may be some traffic impacts, it will be noisy at times, and some dust may be generated. Please be assured that we will implement measures to manage and minimise these impacts on the community where possible.

Temporary signage will safely guide all road users around any changed traffic conditions. Please keep to the speed limits and follow the direction of the traffic controllers and signs where appropriate.

We will turn off machinery when not in use, arrange work in stages and/or phase the equipment used at one time to reduce noise impacts where possible.

The movement of materials and machinery on site may result in the generation of dust. We will take practical measures to reduce the amount of dust produced by our works where possible.

For information on passenger train impacts, please contact Transport for NSW on 131 500 or visit <https://transportnsw.info>

For information on our planned works please scan the below QR code with your device.

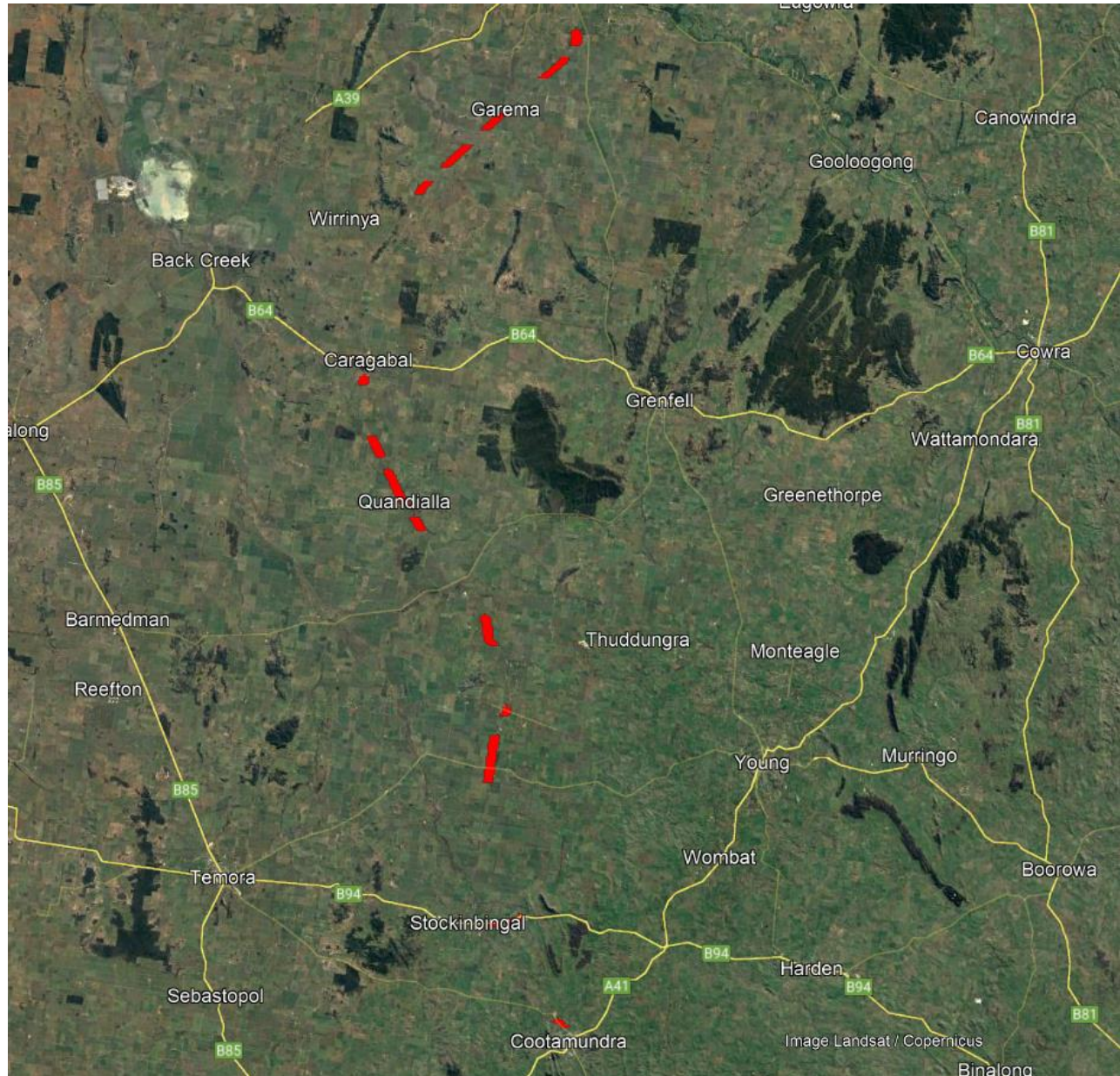
WANT TO KNOW MORE?

ARTC is committed to working with landowners, communities, state and local government agencies as a vital part of our planning and consultation work, and we value your input. If you have any questions or comments, please let us know.

1300 550 402
enviroline@ARTC.com.au
artc.com.au



Work site locations:



Our response to COVID-19

Rail is an essential service which facilitates the movement of freight across the country for the benefit of the Australian economy and jobs. This is a responsibility ARTC takes very seriously, and we are working hard to ensure we balance the challenge of ensuring the safety and reliability of a critical transport network, alongside our obligations to meet and respond to the current public health challenges associated with Covid-19. We are committed to adhering to the NSW Government guidelines and where practicable will implement additional control measures.