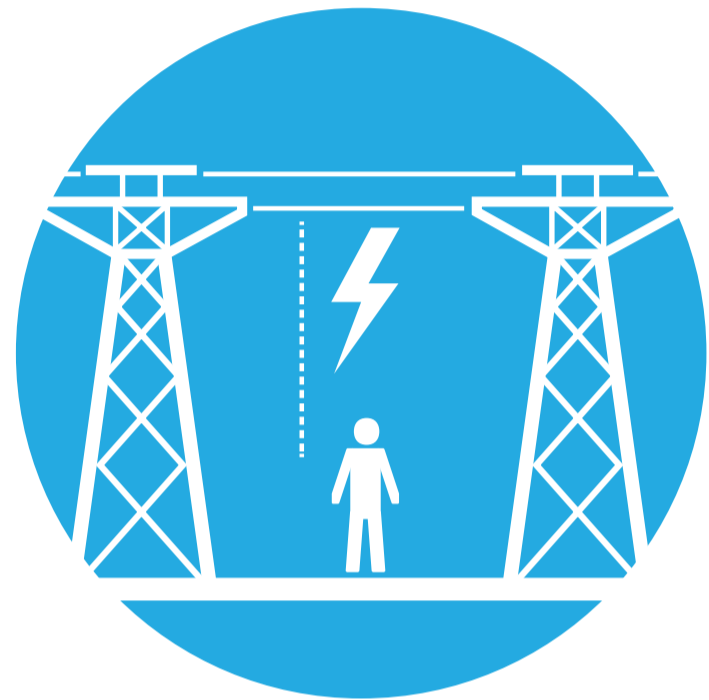


CONTACT WITH ELECTRICITY

LIFE SAVING BEHAVIOURS

I WILL ONLY WORK ON OR NEAR ELECTRICAL EQUIPMENT THAT HAS BEEN ISOLATED AND TESTED FOR DEAD UNLESS AUTHORISED



WHAT IS EXTRA LOW VOLTAGE?

- Does not exceed 50 volts alternating current (50 Vac) or 120 volts ripple-free direct current (120 V ripple-free dc)
- Found in some rail signal communications (level crossing signals)
- 120 volt ac signalling equipment is NOT extra low voltage

MANAGING RISKS - WHAT CAN YOU DO?

- Always isolate and TEST for DEAD before you touch.
- Ensure you maintain safe approach distances to electrical services.
- Only competent and authorised workers are able to assess electrical risks and perform electrical work.