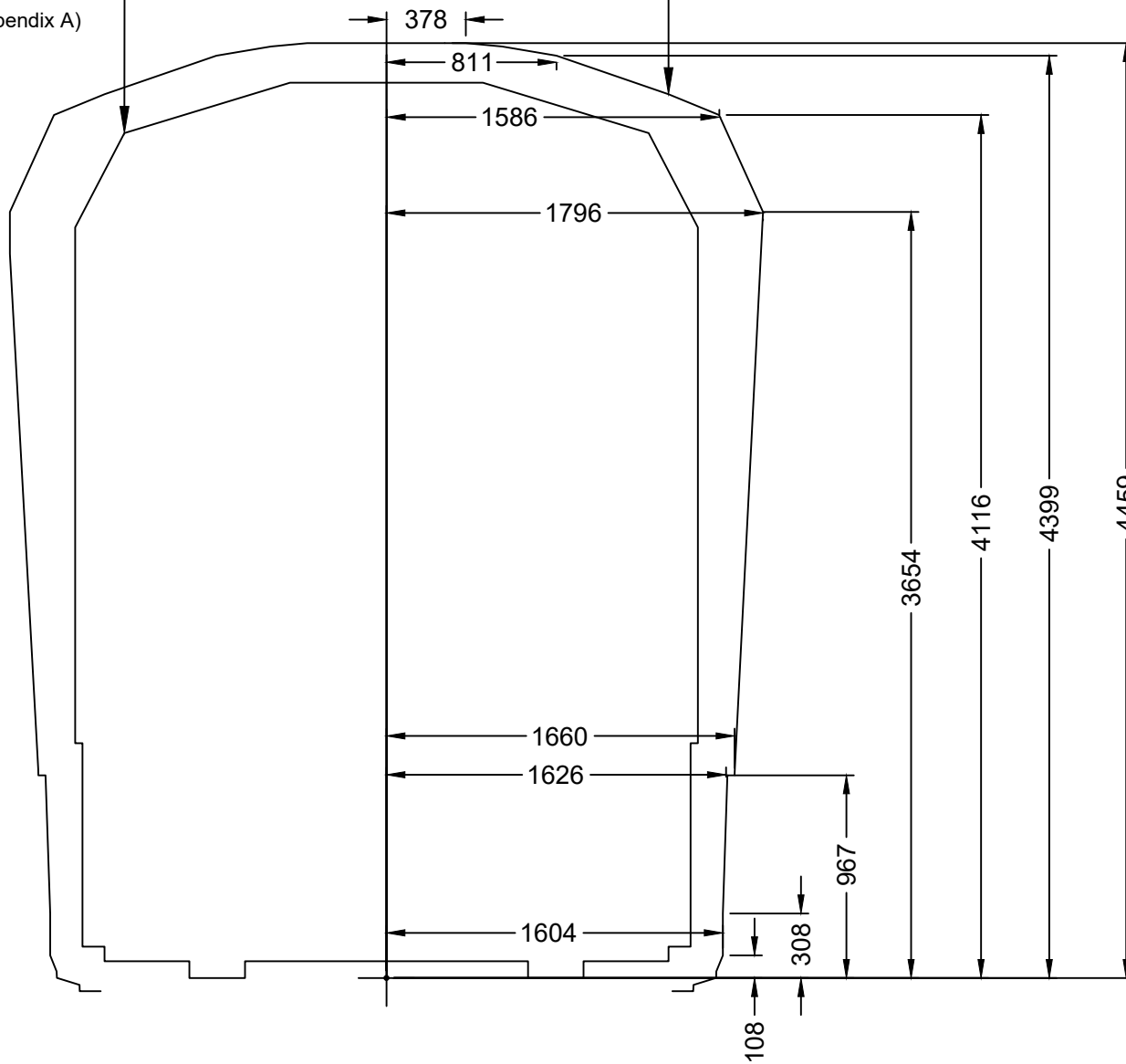


Static Profile

(see RAS: Appendix A)

Kinematic Profile for Straight Track



Kinematic Profile C	
Horizontal X	Vertical Y
278	4459
378	4459
551	4443
811	4399
1345	4215
1586	4116
1796	3654
1796	3454
1796	3454
1661	997
1660	967
1626	967
1604	308
1604	108
1573	31
1572	1

© [2022] Australian Rail Track Corporation Ltd.

Drawing standard in accordance with EGP-04-01 & EGP-04-02

Used on / Next higher assembly: ARTC equipment number:

Filename:
ARTC_ROLLING_STOCK_PROFILE_C.DWG

Alternate DMS number:
N/A - Ops Stds Template

2.0	30/11/2022	Re-drawn files, available as PDF and CAD files	30/11/22	16/12/22	n/a	20/12/22	n/a
2.1	22/12/2022	Amended dimensions to reflect mm. Added notation to differentiate profiles.	22/12/22	22/12/22	n/a	23/12/22	n/a
2.2	10/05/2023	Corrected dimensions and formatting. Added table for reference.	10/05/23	08/09/23	n/a	08/09/23	n/a

Designing Company:

Designed: W.MACDONALD 10/05/23

Checked: C.SOUTHERN 08/09/23

Approved By: M.MACKIE

nd.Rev. Company: nd.Rev. Name:

Signed: On file Signed:

Approval Date: 08/09/23 Acceptance Rate:

ARTC ACCEPTANCE

Accepted By:

Signed:

Signed:

Acceptance Rate:

ARTC

Profile C

TITLE

ARTC Rolling Stock Profile C

Sheet No. 1 of 1

SHEET SIZE A4

Scale: 1:X