

## Safety Alert

ARTC No. 97  
Issued 11/05/2017

### Working On Points

#### Incident

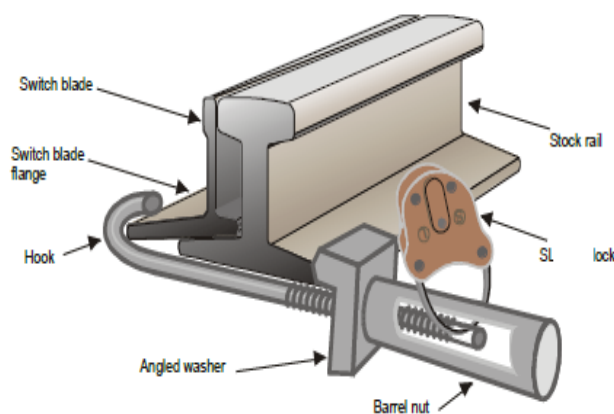
This alert has been issued following an incident where a work group were undertaking work on a set of points. The Protection Officer undertook the worksite assessment and called the NCO to obtain a CSB. Once confirmed, the workers inserted a hardwood block into the points to prevent a crush injury in the event the points moved as a form of secondary protection. While undertaking work the points motor started and the team immediately stopped work and reported the hazard. There have been two other occasions in recent times of similar incidents.

It is a common belief among workers that a CSB prevents the points from being moved however this is not the case. In NSW, a CSB is the control to prevent rail traffic entering the worksite; **this does not prevent the points from moving** which could potentially result in a severe crush injury. The only ways to effectively isolate the points is to:



ESML Handle

- Request blocking facilities be applied to these points by the Network Controller, or
- Remove the ESML handle or EOL key or by operating the manual control lever to electrically isolate the point motor, or
- Clip and/or lock the points using a point clip and safeworking lock



Care is required when working near points as they can move without warning. **If the risk of injury through inadvertent movement exists, the Protection Officer must isolate the points by removing the ESML handle or EOL key, or by clipping and/or locking the points.**

#### For your action

1. Place Safety Alert on display and make copies of this alert available to people who report to you (without regular email access) and ensure that the contents of the safety alert are discussed/explained to your staff.
2. If engaging contractors, ensure they are made aware of current ARTC Safety Alerts.
3. Ensure a method of sign-off is obtained (eg via tool-box/safety meetings/morning briefings etc) to verify that the Safety Alert has been distributed and discussed.
4. If you have any safety concerns with this Safety Alert please speak directly to your supervisor.

#### Further information

- All Safety Alerts issued can be [found here](#).
- For further information please contact Brett Teasdale on [bteasdale@artc.com.au](mailto:bteasdale@artc.com.au) or 0437 556 209