

D6 Crystal Brook – Spencer Junction

RAS DIRN Section Page

Applicability

ARTC Network Wide

SMS

Publication Requirement

Internal / External

Primary Source

Previous Section Page version + RACNs

Document Status

Version #	Date Reviewed	Prepared by	Reviewed by	Endorsed	Approved
1.9	26/02/2021	Manager Procedures Development	Stakeholders	Manager Standards 16/04/2021	GM Technical Standards 16/04/2021

Amendment Record

Amendments to the RAS are published at the following link

<https://www.artc.com.au/uploads/RAS-Amendment-Register-Master.xlsx>

All changes in this document are highlighted with this colour

Disclaimer

This document has been prepared by ARTC for internal use and may not be relied on by any other party without ARTC's prior written consent. Use of this document shall be subject to the terms of the relevant contract with ARTC.

ARTC and its employees shall have no liability to unauthorised users of the information for any loss, damage, cost or expense incurred or arising by reason of an unauthorised user using or relying upon the information in this document, whether caused by error, negligence, omission or misrepresentation in this document.

This document is uncontrolled when printed.

Authorised users of this document should visit ARTC's intranet or extranet (www.artc.com.au) to access the latest version of this document.

Table of Contents

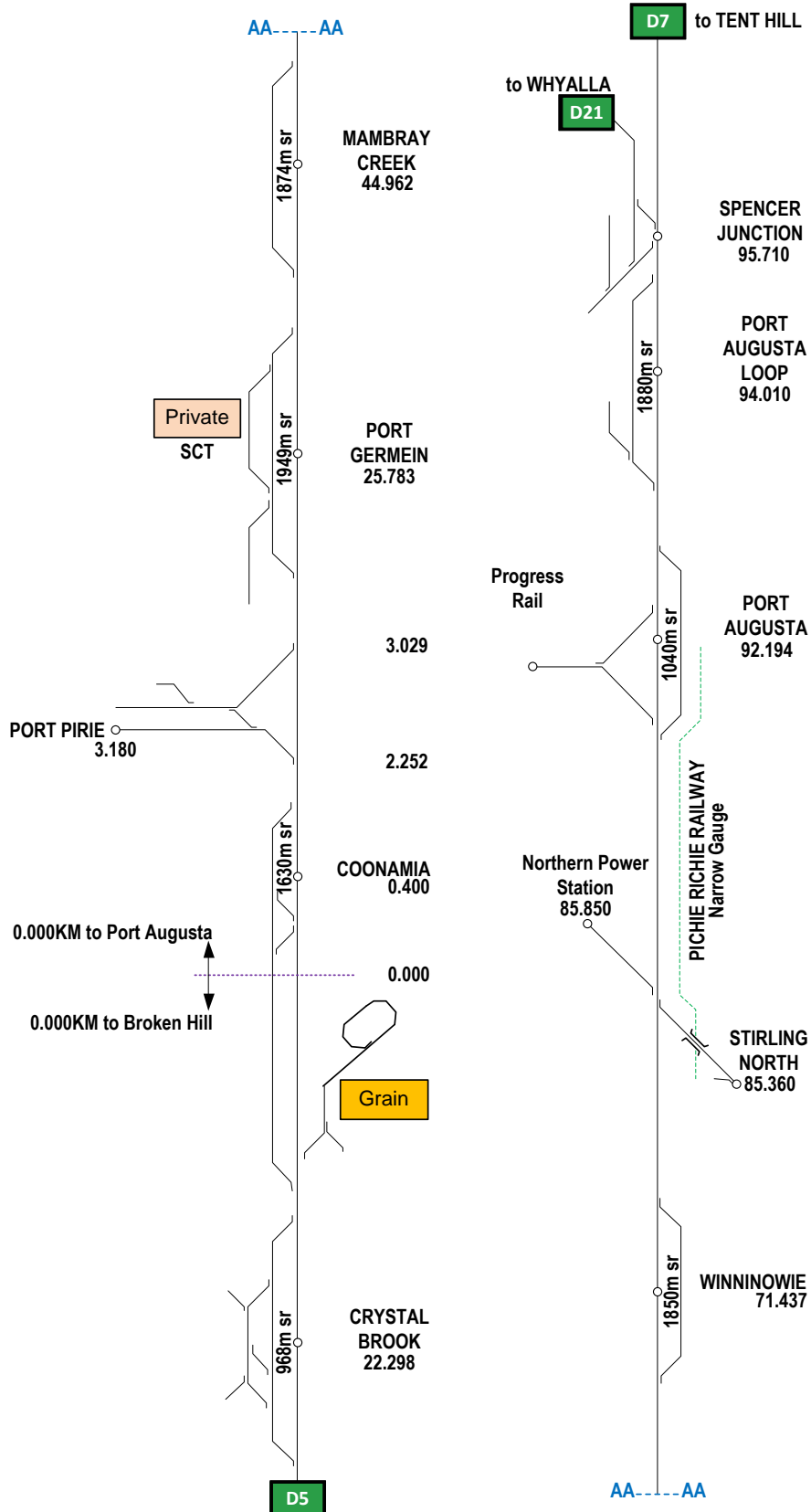
Table of Contents	2
1 Network Diagram	3
2 Route Capacity	4
3 Permanent Speed Restrictions	4
4 Special Speed Restrictions	5
5 Significant Kilometre Markings.....	5

1 Network Diagram

NB: These line maps are indicative only.

D6

CRYSTAL BROOK – SPENCER JUNCTION



2 Route Capacity

CRYSTAL BROOK – SPENCER JUNCTION			
TRAIN TYPE	MAXIMUM SPEED	MAXIMUM AXLE LOAD (TONNES)	
	(KM/H)	LOCOS	WAGONS
		134T MAXIMUM LOCOMOTIVE WEIGHT	
	115	22.8*	21
	100	22.8*	23
	80	22.8*	25
PASSENGER LOCO HAULED	115	22.8*	19

Note:

- Route capacity applies where vehicle characteristics and conditions permit.
- * These posted axles load are to account for the variability in axle loads for some classes of locomotive. The maximum locomotive weight must still be adhered to.

3 Permanent Speed Restrictions

COONAMIA – PORT PIRIE			
LINE SEGMENT	EXCEPTION TO MAXIMUM		RESTRICTED SPEED
	SPEEDS LOCATION		
COONAMIA	2.390 KM	SIGNAL NUMBER 36	60
	TRIANGLE FROM PORT PIRIE YARD TO SPENCER JUNCTION		
	SIGNAL NUMBER 33	3.000 KM	30

CRYSTAL BROOK – SPENCER JUNCTION		
LINE SEGMENT	EXCEPTION TO	RESTRICTED SPEED
	MAXIMUM	
	SPEEDS LOCATION	
	23.900 KM	70 UP South Through Triangle to Dry Creek
	22.600 km	50 UP South through triangle to Dry Creek
CRYSTAL BROOK	22.000 KM	

	2.390 KM		35 DN North through triangle to Port Augusta	UP Resume Normal Speed
		3.000 KM	DN Resume Normal Speed	35 UP East through triangle to Crystal Brook
PORT GERMEIN	5.750 KM*		100 DN	UP Resume Normal Speed
MAMBRAY CREEK	44.962 KM			
WINNINOWIE	71.437 KM			
		81.400 KM	100 DN	
		82.060 KM	70 DN	
	82.600 KM			100 UP
		83.100 KM		UP Resume Normal Speed
	84.700 KM		60 DN	70 UP
STIRLING NORTH	85.268 KM			
PORT AUGUSTA	92.194 KM			
		95.280 KM		

* ON CURVES BETWEEN

4 Special Speed Restrictions

CRYSTAL BROOK – SPENCER JUNCTION		
LOCATION	MAXIMUM SPEED	
	WHEN RUNNING FROM LINES DIVERGING FROM THE STRAIGHT TRACK (KM/H)	WHEN RUNNING ON THE STRAIGHT TRACK (KM/H)
ALL DUAL GAUGE TURNOUTS	20	LINE SPEED FOR TYPE OF TRAIN

5 Significant Kilometre Markings

The following locations on the network have kilometre posts that change on the ground and do not follow the measured distance between kilometre posts:

Coonamia to Spencer Junction;

1. Coonamia 0 km increasing to Spencer Junction.