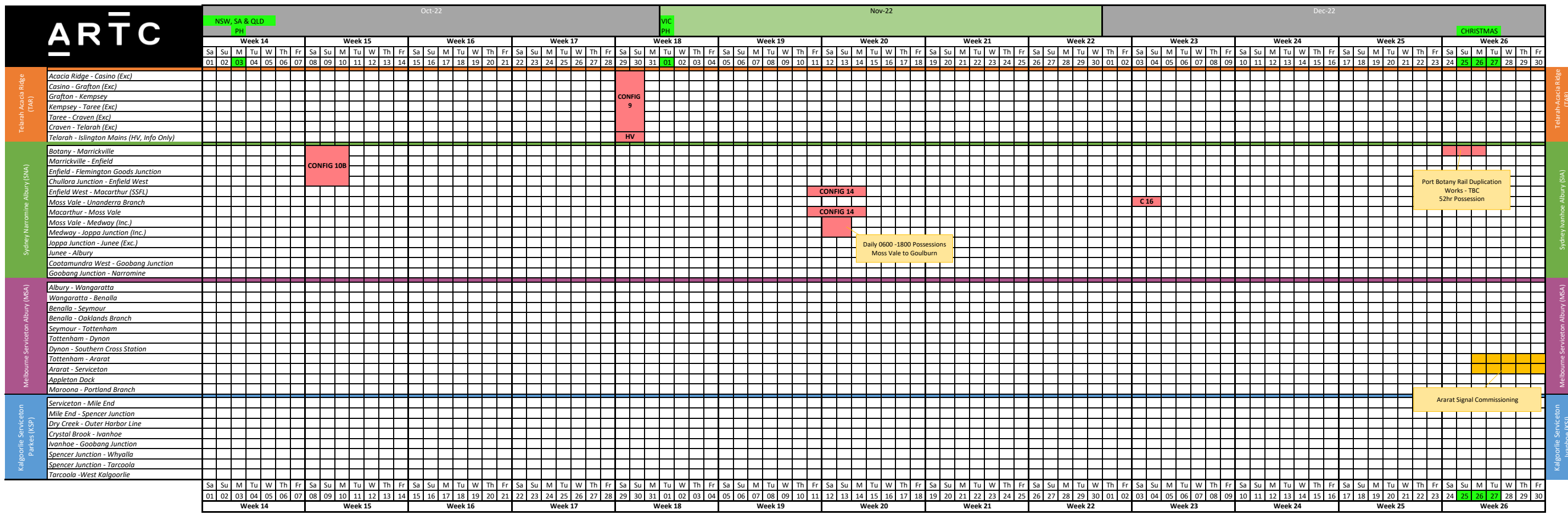
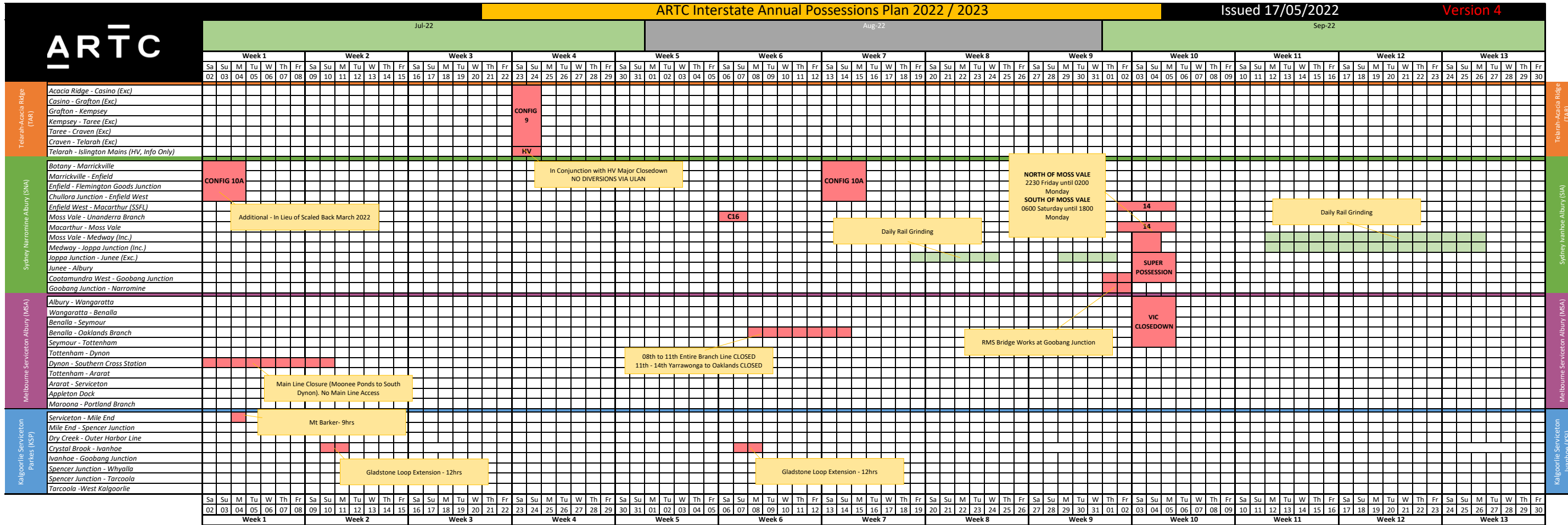


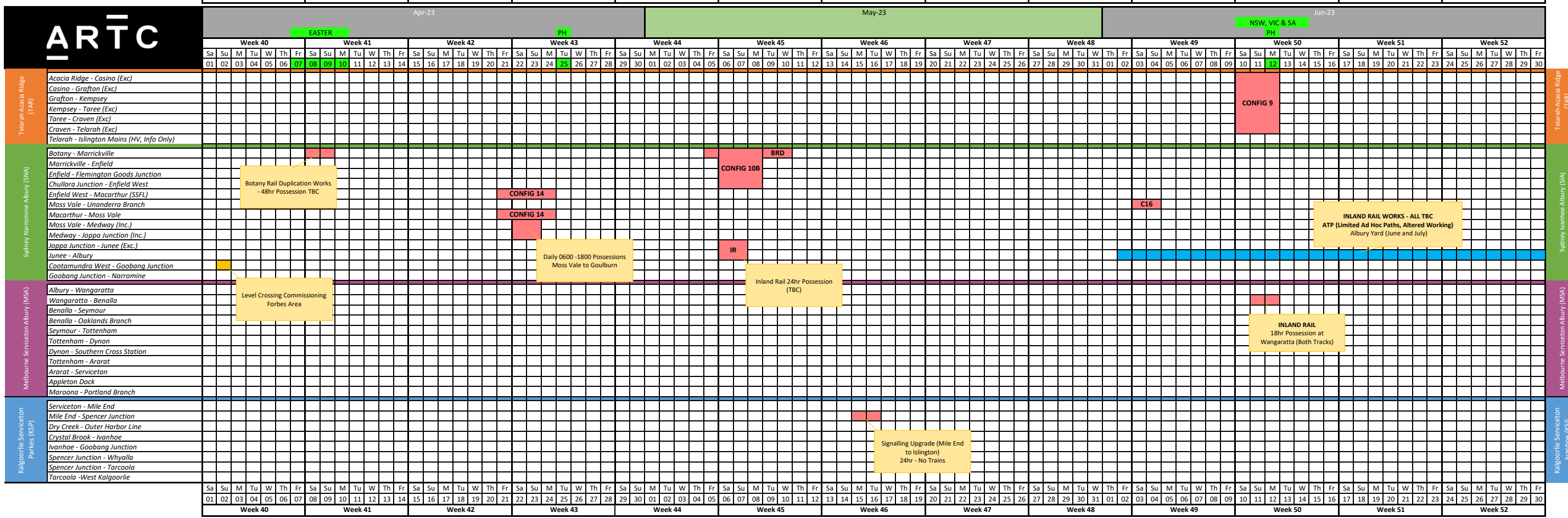
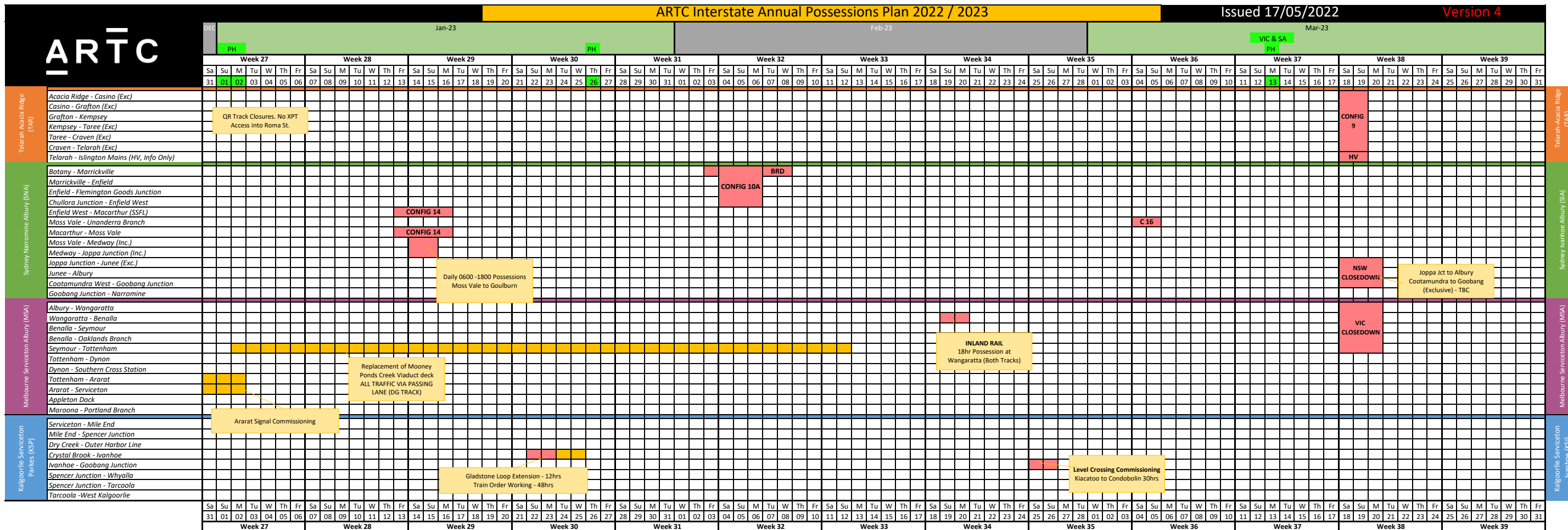
ARTC Interstate Annual Possessions Plan 2022 / 2023

Issued 17/05/2022

Version 4



 Track Closedown	 ATP Works (With Ad Hoc)	 Pilot Staff Working Via Up	 Mandatory's diverted/amended (no ad hoc)	 B = Both Tracks, U = Up Main, D = Down Main, E = East Track, W = West Track, NTP = No Train Period, ATP = As Traffic Permits, PSW = Pilot Staff Working
 Rail Grinding	 Window Possession (No Ad Hoc)	 Pilot Staff Working Via Down	 Ultrasonic Testing (Speno)	Config 10A = Flem Junction Closed, Config 10B = Flem Junction Open



■ Track Closedown
 ■ ATP Works (With Ad Hoc)
 ■ Pilot Staff Working Via Up
 ■ Mandatory's diverted/amended (no ad hoc)
 ■ Window Possession (No Ad Hoc)
 ■ Ultrasonic Testing (Speno)
 ■ Rail Grinding
 ■ Pilot Staff Working Via Down

B = Both Tracks, U = Up Main, D = Down Main, E = East Track, W = West Track, NTP = No Train Period, ATP = As Traffic Permits, PSW = Pilot Staff Working
 Config 10A = Flem Junction Closed, Config 10B = Flem Junction Open