



AUSTRALIAN RAIL TRACK CORPORATION LTD
Route Access Condition Notice
14-00006

Distributed To:	ARTC Website
Distribution Date:	12/08/14
Requested By:	ARTC
Subject:	Signalling upgrade works at Hexham
Effective Period:	19/08/14 – Until Published
Amendment Type:	Permanent (to be added to RAS)

Note: Permanent Route Access Condition Notices (RACN) are periodically updated in the ARTC Route Access Standard (RAS), at which time the relevant RACN is withdrawn.

RAS Reference:

Section: H1 **Version No.:** 1.3 **Page/s:** 8-17

ARTC Network Location:

Line Section: (Hexham) Islington Junction to Muswellbrook
Kms: 172.000 – 182.000

RACN 140006 issued for the following change; due to a re-signalling project between Hexham and Sandgate in the Hunter Valley; commissioned 19 August 2014, new speed boards will be installed and redundant ones removed. This change affects RAS section page H1 as detailed below. During the correlation of the boards, discrepancies have been identified between the RAS and what is actually on site. These changes are also outlined below. This RACN is in accordance with SAFE notice 2-2138 and NAN 2282.

REVISED INFORMATION:

ISLINGTON JUNCTION – MUSWELLBROOK (MAIN LINE)

LOCATION	KILOMETRAGE	DOWN		UP	
		Normal	XPT	Normal	XPT
ISLINGTON JUNCTION BOX	164.647				
	164.710	115	120	-	-
	165.478	-	-	95	95
WARATAH	165.964				
	166.840	-	-	115	150
HANBURY JUNCTION BOX	167.934				
	168.090	80	90	90	110
WARABROOK	168.685				
	169.000	X25	-	-	-
	169.214	115	140	110	120
SANDGATE	170.509				
	170.738	-	-	115	140
	170.759	100	100	-	-
	171.800	-	-	X25	-
	171.693	115	160	100	100
	171.930	-	-	X70	-
	172.060	-	-	115	115
175.000	-	-	115	160	
HEXHAM	175.530				
	175.829			85	90
UP Refuge	176.262			X45	X45*
	176.800	115	150		
	178.023			X45	X45
TARRO	178.178				
	179.320			115	150
BERESFIELD	179.806				

Comment [RP1]: RACN 140006 Revised location of speed board. Updated as part of Hexham re-signalling 23/07/14

Comment [RP2]: RACN 140006 Revised location of speed board. Updated as part of Hexham re-signalling 23/07/14

Comment [RP3]: RACN 140006 Revised location of speed board. Updated as part of Hexham re-signalling 23/07/14

Comment [RP4]: RACN 140006 Missing Information in transfer from TOC to RAS Updated as part of Hexham re-signalling 23/07/14

WARATAH - MAITLAND (COAL LINE)

LOCATION	KILOMETRAGE	DOWN ¹	UP ¹
		Normal	Normal
SCHOLEY STREET	164.000	40	-
	164.905	35	-
	164.940	40	35
WARATAH	165.964		
	166.080	X25	-
	166.290	-	X25
	167.510	105	40
HANBURY JUNCTION	167.658	-	-
	167.980	115	105



WARATAH - MAITLAND (COAL LINE)

LOCATION	KILOMETRAGE	DOWN ¹	UP ¹	
		Normal	Normal	
WARABROOK	168.685			
	170.340	90	115	
SANDGATE	170.509	-	-	
	171.335	-	X55	
	171.363	-	90	
	171.502	-	X70	
	171.520	X70	-	
	171.635	100	-	
	171.700	X70	-	
	172.095	115	-	
		174.000	80	
HEXHAM <i>*On Up Weighbridge</i>	175.530			
	177.000		60	
	178.114	95	115	
	178.390	115	90	
	182.038	70	115	
THORNTON	182.194			

Comment [RP5]: RACN 140006 Revised Information Speed board Removed. Updated as part of Hexham re-signalling 23/07/14

Comment [RP6]: RACN 140006 Information Redundant. Updated as part of Hexham re-signalling 23/07/14

Comment [RP7]: RACN 140006 Revised Information, New Speed board. Updated as part of Hexham re-signalling 23/07/14

Comment [RP8]: RACN 140006 Revised Information, Speed board removed. Updated as part of Hexham re-signalling 23/07/14

Comment [RP9]: RACN 140006 Revised Information, weighbridge removed 2013

Comment [RP10]: RACN 140006 Revised Information, New Speed board. Updated as part of Hexham re-signalling 23/07/14

Comment [RP11]: RACN 140006 Revised Information, Speed board removed. Updated as part of Hexham re-signalling 23/07/14

KILOMETRAGE (KM)	SIGNAL NUMBER	SPEED SHOWN ON SIGN (KM/H)
172.580	Down Automatic, Hexham (M107.3)	90
172.580	Number 56 Down Accept, Hexham (C107.3)	90
175.246	Number 12 Up Starting, Hexham (M108.6)	80
176.800	Down Automatic, Tarro (M109.9)	80
176.800	Down Automatic, Tarro (C109.9)	80
179.665	Down Automatic (M111.9)	85
179.665	Down Automatic (C1119.9)	85
182.080	Up Automatic (M113.0)	90
182.080	Up Starting (C113.0)	90
186.100	Up Automatic (M115.4)	85
186.100	Up Automatic (C115.4)	85
188.636	Up Automatic (M117.0)	75
188.636	Up Automatic (C117.0)	75
190.650	Up Automatic (C118.4)	80
191.530	Up Automatic (C118.8)	80
212.985	Up Automatic (131.8)	90

216.600	No 3 Up Home Branxton (134.2)	75
221.600	No 19 Down 2 nd Home Belford (134.2)	60
231.900	No 1 Down Accept Whittingham (144.7)	80
236.025	No 1D Up Accept Whittingham (146.4)	95
240.097	No 81 Up Home, Singleton (148.6)	70
259.835	Up Automatic Ravensworth (161.0)	70
262.362	No 9 Up 4 th Home and starting, Newdell Junction (162.4)	80
263.700	No 6 Up 3 rd Home, Newdell Junction (163.0)	85
266.900	No 2 Up Home Newdell Junction	85
272.580	No 54 Up Home and starting Drayton Junction (169.0)	80
274.075	No 13 Muswellbrook (170.6)	70

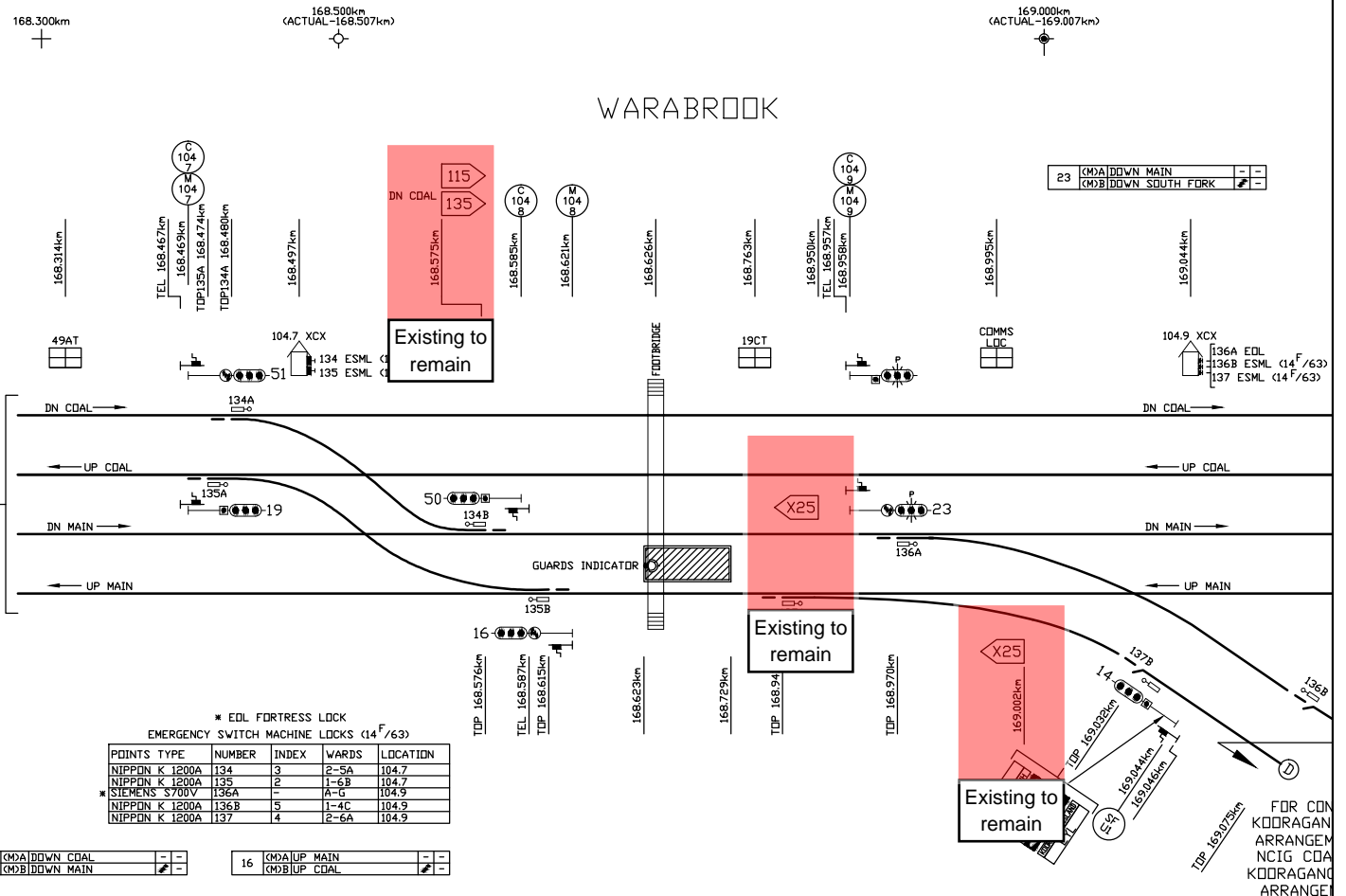
Issued By: Richard Potts
Australian Rail Track Corporation

Approved By: John Furness - Manager Standards (Minor)

NAN Ref (if applicable): 2282

SANDGATE
 SIGNALLING ARRANGEMENT
 168.300km TO 173.000km
 FILE No.C363050DD.DWG

FOR CONTINUATION REFER TO
 HANBURY JUNCTION
 SIGNALLING ARRANGEMENT

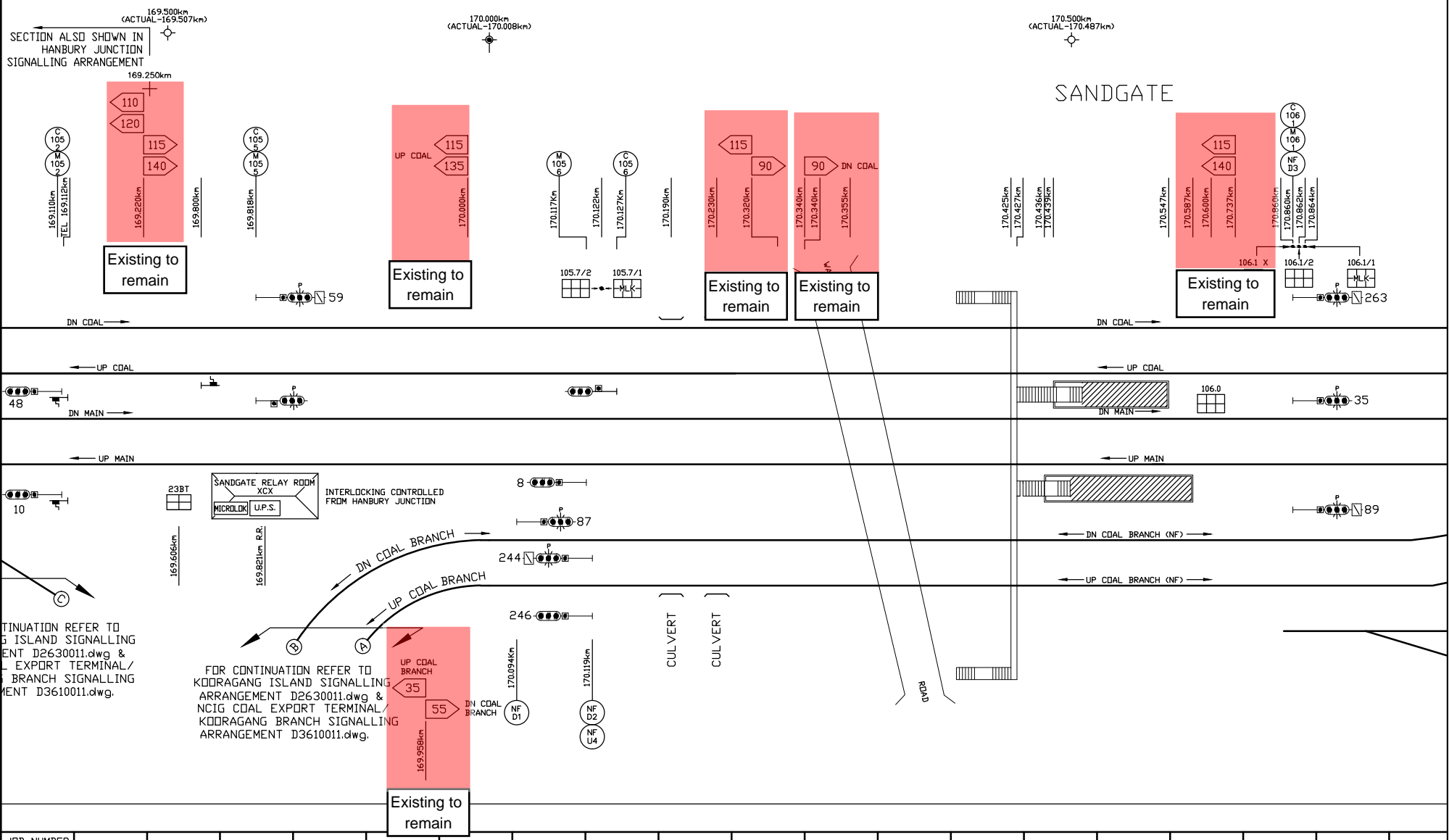


EMERGENCY SWITCH MACHINE LOCKS (14 F/63)

POINTS	TYPE	NUMBER	INDEX	WARDS	LOCATION
NIPPON K 1200A	134	3	2-5A	104.7	
NIPPON K 1200A	135	2	1-6B	104.7	
SIEMENS S700V	136A	1	A-G	104.9	
NIPPON K 1200A	136B	5	1-4C	104.9	
NIPPON K 1200A	137	4	2-6A	104.9	

51	CDN DOWN COAL	-	-
	CDN DOWN MAIN	▶	-

16	CDN UP MAIN	-	-
	CDN UP COAL	▶	-



171.000km
(ACTUAL-170.989km)

POINT NUMBER	MACHINE TYPE	EDL CODING
181	DB4M	AM
183	DB4M	AI
184	DB4M	AK

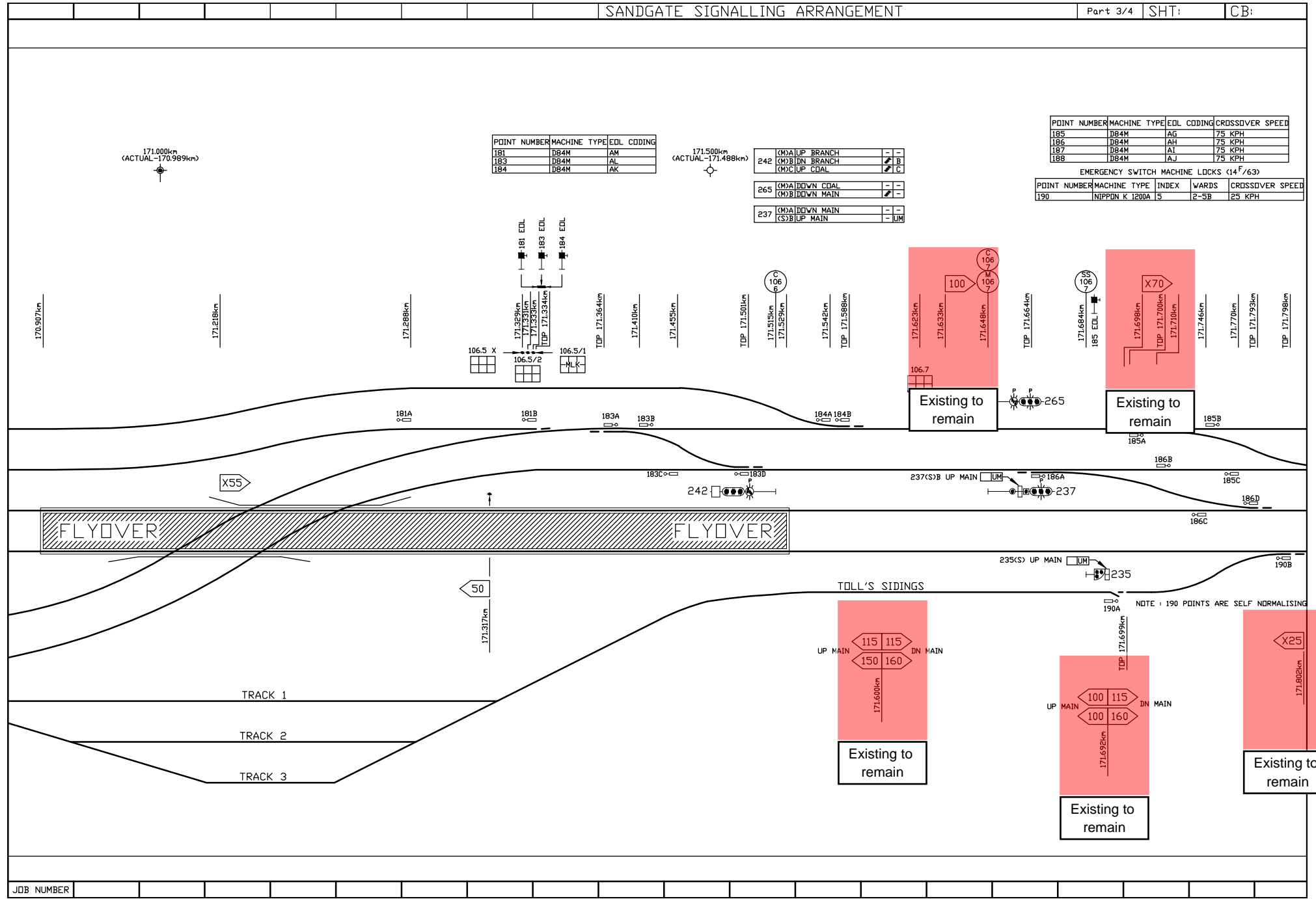
171.500km
(ACTUAL-171.488km)

242	(MA) UP BRANCH	-	-
	(NB) DN BRANCH	-	-
	(MC) UP CDAL	-	-
265	(MA) DOWN CDAL	-	-
	(MB) DOWN MAIN	-	-
237	(MA) DOWN MAIN	-	-
	(SB) UP MAIN	-	UM

POINT NUMBER	MACHINE TYPE	EDL CODING	CROSSOVER SPEED
185	DB4M	AG	75 KPH
186	DB4M	AH	75 KPH
187	DB4M	AI	75 KPH
188	DB4M	AJ	75 KPH

EMERGENCY SWITCH MACHINE LOCKS (14 F/63)

POINT NUMBER	MACHINE TYPE	INDEX	WARDS	CROSSOVER SPEED
190	NIPPON K 1200A	5	2-5B	25 KPH



NOTE: 190 POINTS ARE SELF-NORMALISING

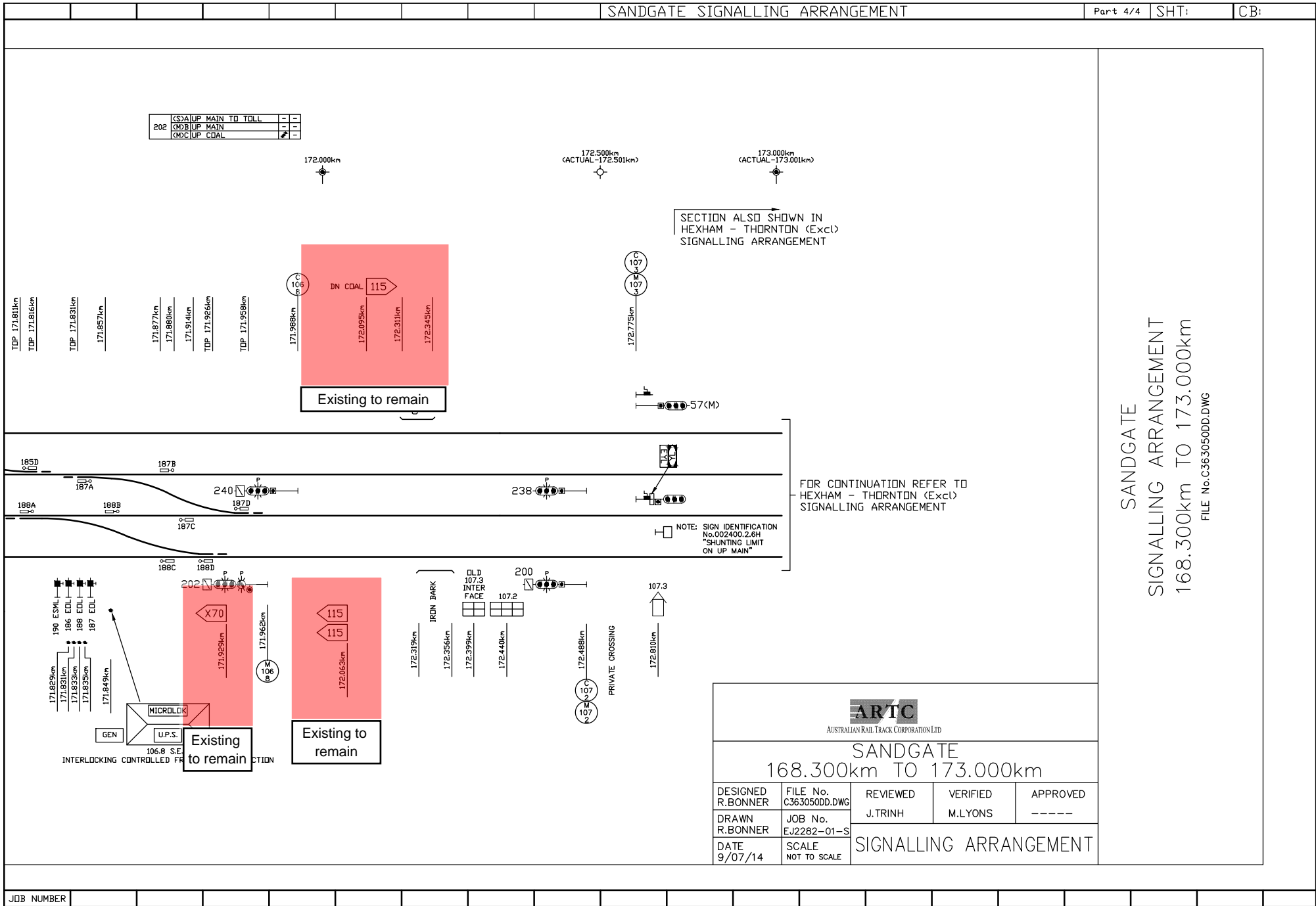
(CS)AUP MAIN TO TOLL	-	-	-
(MD)BUP MAIN	-	-	-
(MD)CUP CDAL	-	-	-


SECTION ALSO SHOWN IN
HEXHAM - THORNTON (Excl)
SIGNALLING ARRANGEMENT

FOR CONTINUATION REFER TO
HEXHAM - THORNTON (Excl)
SIGNALLING ARRANGEMENT

NOTE: SIGN IDENTIFICATION
No.002400.2.6H
"SHUNTING LIMIT
ON UP MAIN"

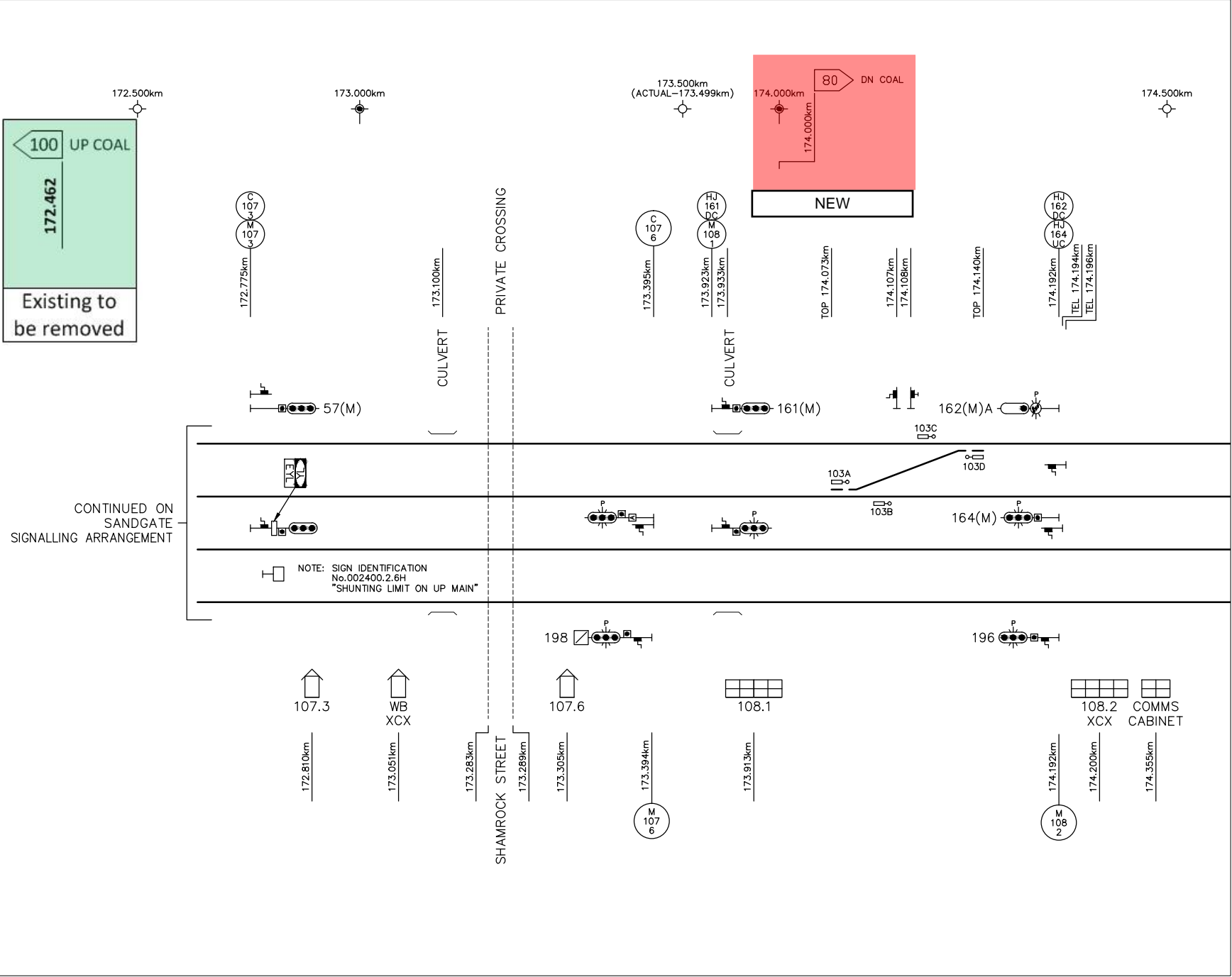
SANDGATE
SIGNALLING ARRANGEMENT
168.300km TO 173.000km
FILE No.C363050DD.DWG

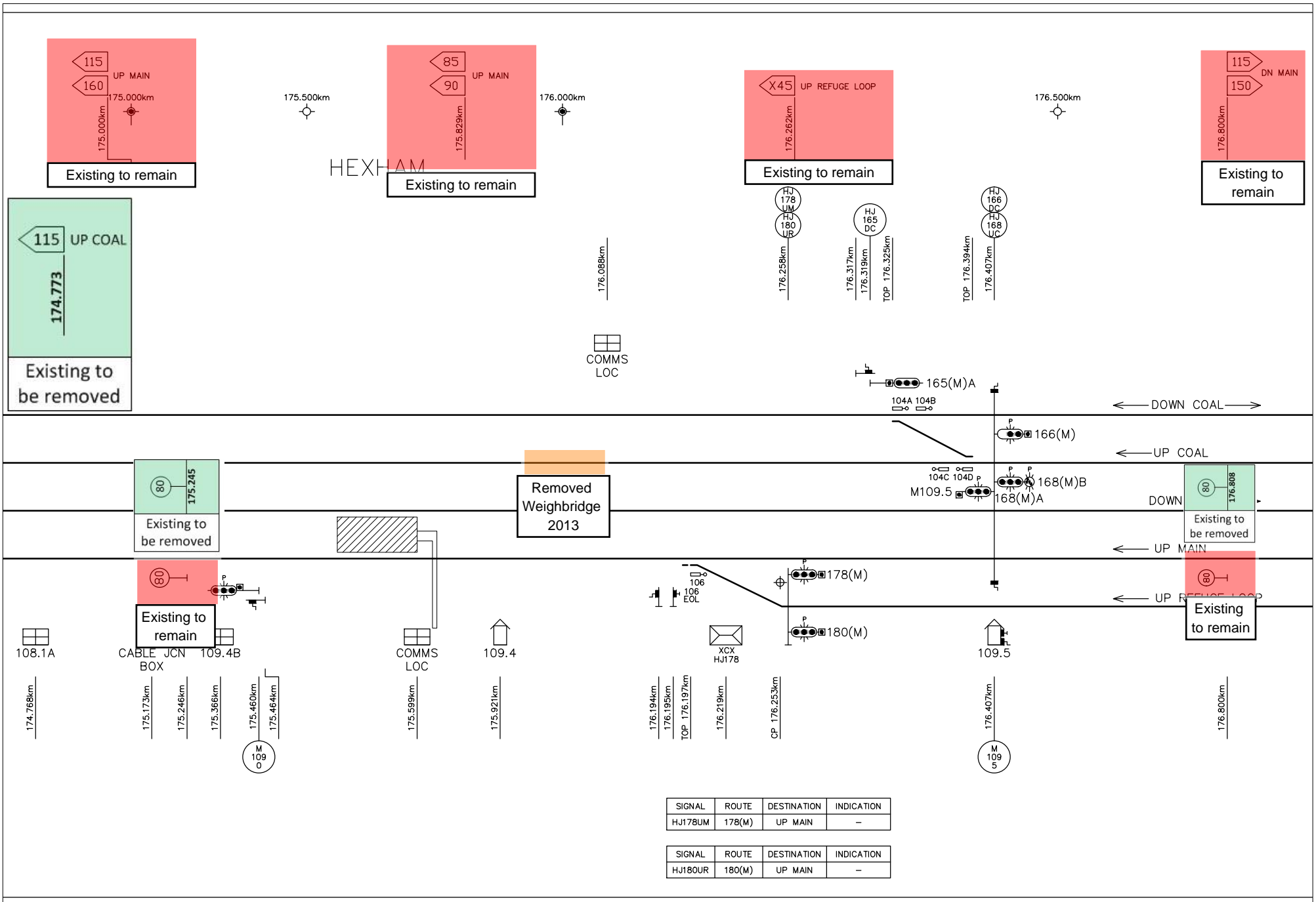


 AUSTRALIAN RAIL TRACK CORPORATION LTD				
SANDGATE 168.300km TO 173.000km				
DESIGNED R.BONNER	FILE No. C363050DD.DWG	REVIEWED J.TRINH	VERIFIED M.LYONS	APPROVED -----
DRAWN R.BONNER	JOB No. EJ2282-01-S	SIGNALLING ARRANGEMENT		
DATE 9/07/14	SCALE NOT TO SCALE			

HEXHAM - THORNTON (Excl) SIGNALLING ARRANGEMENT

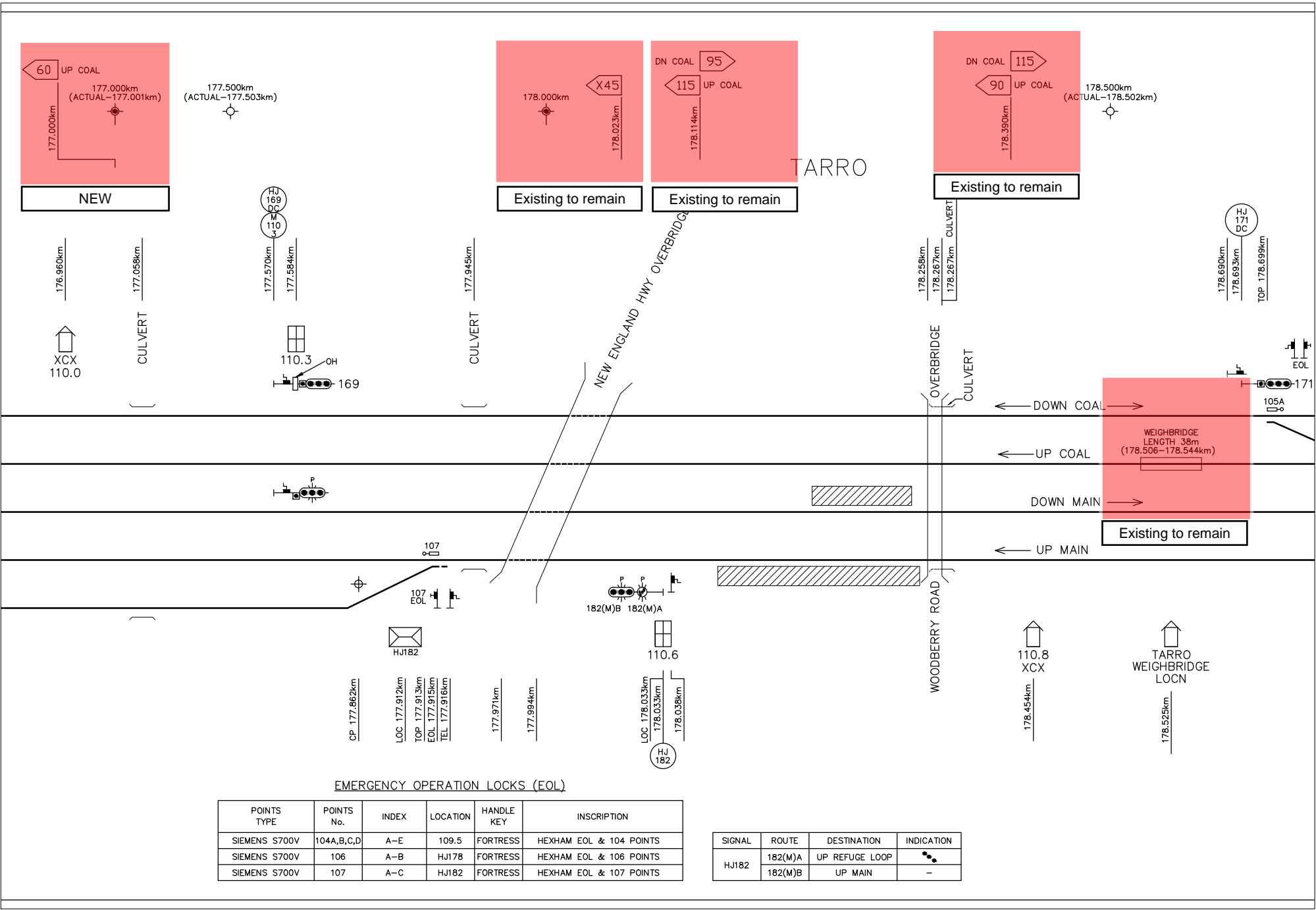
D0430011DD.DWG





SIGNAL	ROUTE	DESTINATION	INDICATION
HJ178UM	178(M)	UP MAIN	-

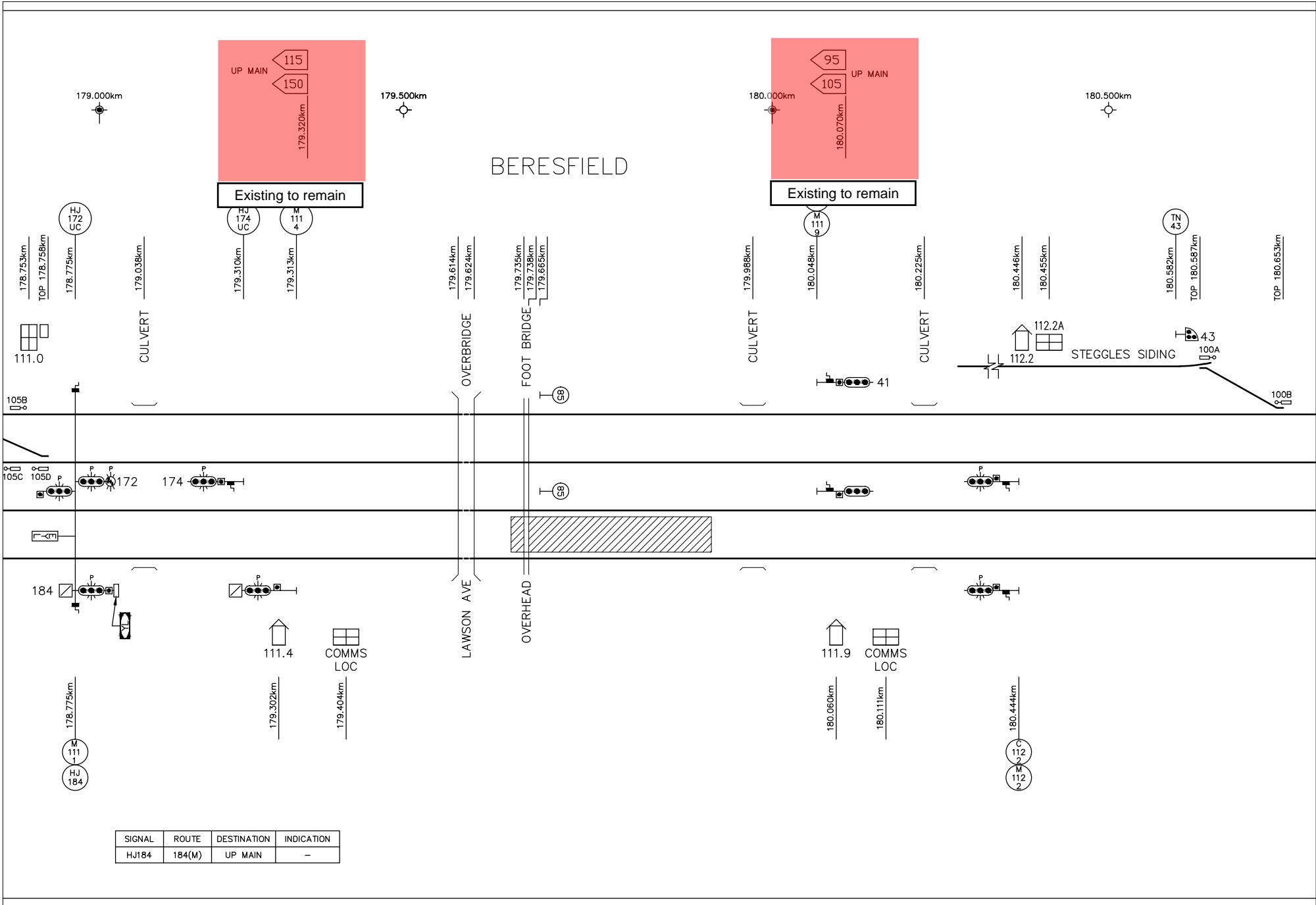
SIGNAL	ROUTE	DESTINATION	INDICATION
HJ180UR	180(M)	UP MAIN	-



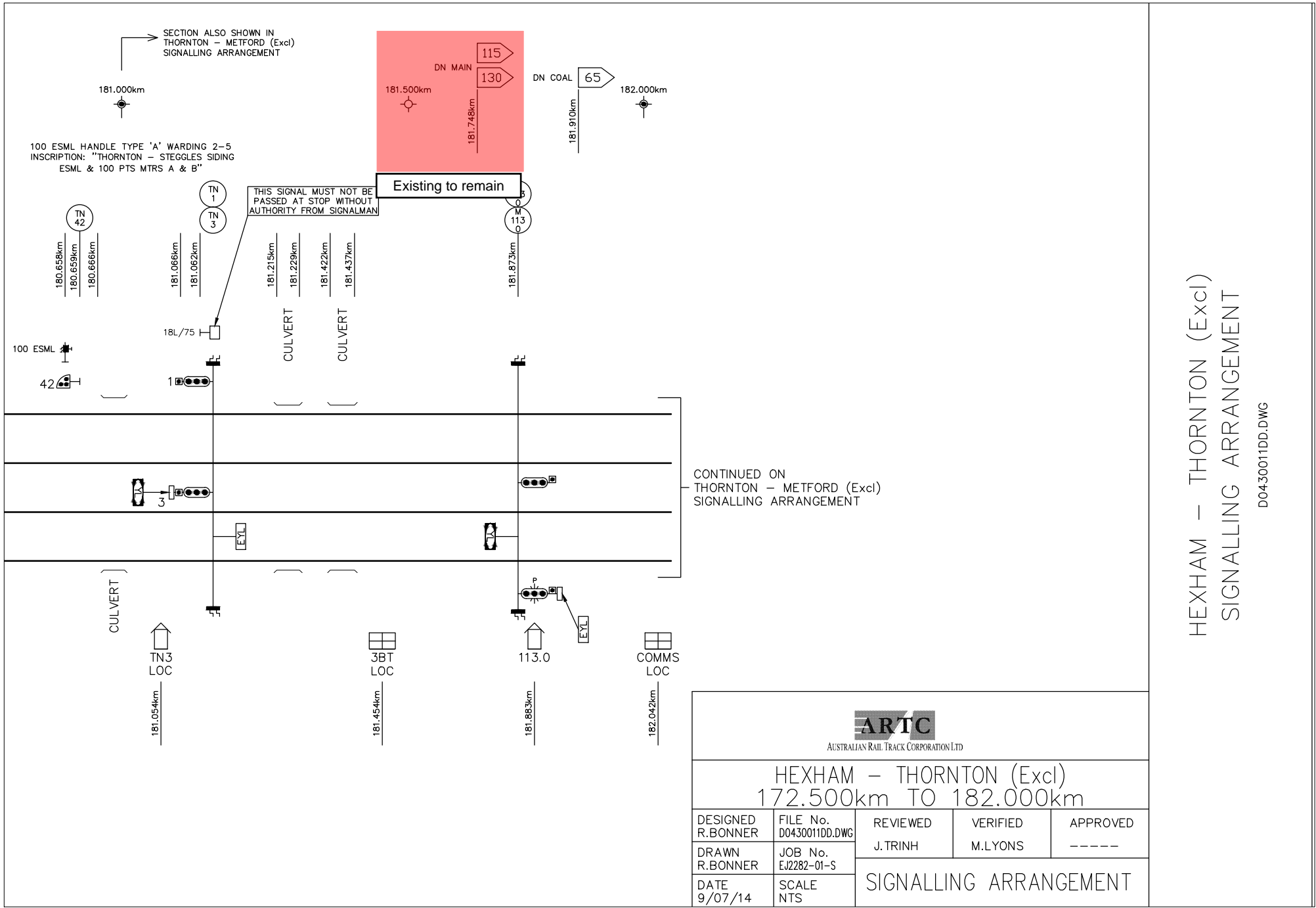
EMERGENCY OPERATION LOCKS (EOL)

POINTS TYPE	POINTS No.	INDEX	LOCATION	HANDLE KEY	INSCRIPTION
SIEMENS S700V	104A,B,C,D	A-E	109.5	FORTRESS	HEXHAM EOL & 104 POINTS
SIEMENS S700V	106	A-B	HJ178	FORTRESS	HEXHAM EOL & 106 POINTS
SIEMENS S700V	107	A-C	HJ182	FORTRESS	HEXHAM EOL & 107 POINTS


SIGNAL	ROUTE	DESTINATION	INDICATION
HJ182	182(M)A	UP REFUGE LOOP	●●●
	182(M)B	UP MAIN	-



SIGNAL	ROUTE	DESTINATION	INDICATION
HJ184	184(M)	UP MAIN	-



HEXHAM – THORNTON (Excl)
SIGNALLING ARRANGEMENT
D0430011DD.DWG

 AUSTRALIAN RAIL TRACK CORPORATION LTD				
HEXHAM – THORNTON (Excl) 172.500km TO 182.000km				
DESIGNED R.BONNER	FILE No. D0430011DD.DWG	REVIEWED J.TRINH	VERIFIED M.LYONS	APPROVED -----
DATE 9/07/14	SCALE NTS	SIGNALLING ARRANGEMENT		