

Route Access Condition Notice 19-0023

Distributed To:	ARTC Website
Distribution Date:	26/06/19
Requested By:	ARTC
Subject:	Speed Restrictions MCINTYRE TO TULLAMARINE LOOP
Effective Period:	Until Published
Amendment Type:	Permanent (to be added to RAS)

Note: Permanent Route Access Condition Notices (RACN) are periodically updated in the ARTC Route Access Standard (RAS), at which time the relevant RACN is withdrawn.

<u>RAS Reference:</u>			
Section:	D1	Version No.:	2.0
		Page/s:	N/A
<u>Information:</u>			
Cross check RAS to TCR 3051 CAN #17608			

D1 Permanent Speed Restrictions

MELBOURNE – SOMERTON							
LINE SEGMENT	EXCEPTION TO MAXIMUM SPEEDS LOCATION			RESTRICTED SPEED			
SOUTHERN CROSS	0.000 KM – 1.623KM			REFER TO ADJACENT TRACK OWNER			
				WEST BOUND DOWN		EAST BOUND UP	
				Freight	Passenger	Freight	Passenger
ARTC BOUNDARY	1.623 KM - 3.500 KM	MAIN LINE		40	40	40	40
	3.500 KM – 3.950 KM	MAIN LINE		15	40	40	40
APPLETON DOCK	0.000 KM - 3.950 KM	MAIN & LOCAL LINE		15	15	15	15

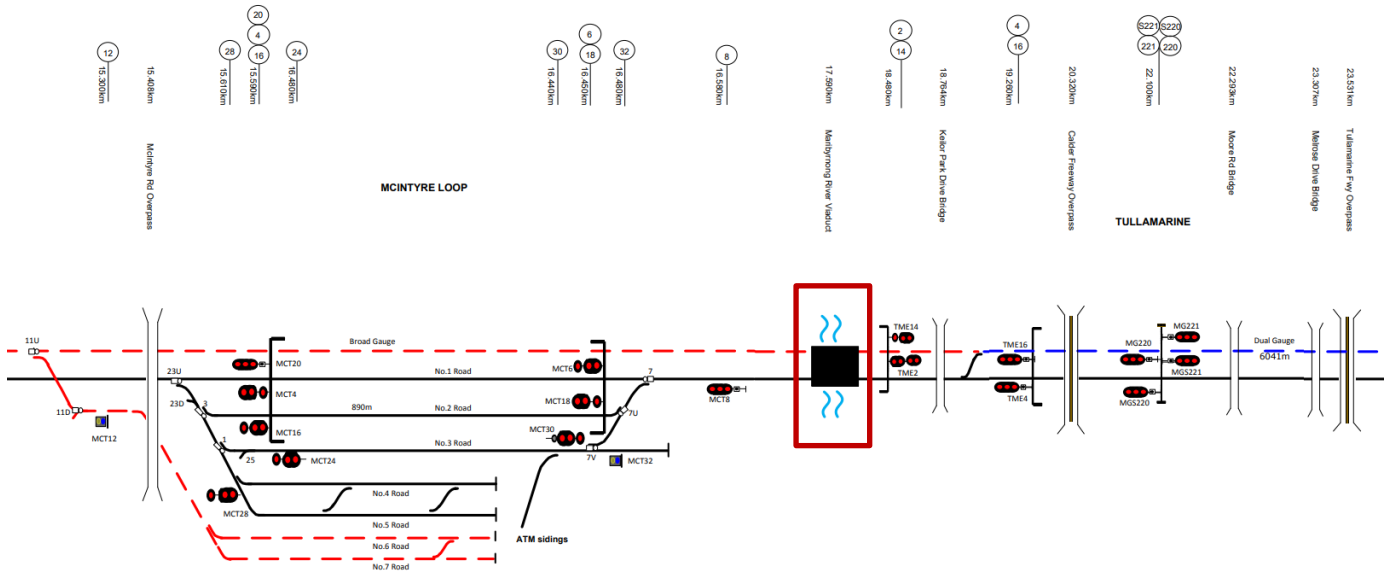
SOUTH DYNON JUNC	3.950 KM – 4.247KM & LOCAL LINE	MAIN	15	35	
SOUTH DYNON JUNC	3.950 KM – 4.670KM LINE	MAIN			15 30
	LOCAL LINE				25 30
SIMS STREET	4.247KM – 4.670KM & LOCAL LINE	MAIN	30	30	
SIMS STREET	4.670KM – 5.290KM LINE	MAIN			15 65
	LOCAL LINE				30 65
	5.290KM – 6.900KM & LOCAL LINE	MAIN			65 65
	4.670KM – 6.900KM & LOCAL LINE	MAIN	65	65	
WEST FOOTSCRAY JUNCTION	NOTE: ABOVE SPEEDS APPLY FOR BOTH STANDARD AND BROAD MOVEMENTS ON DUAL GAUGE TRACK.				
	6.900 KM		8.600 KM		65
	8.600 KM		10.120 KM		80
TOTTENHAM JUNCTION	10.120 KM*		13.980 KM		95
	13.980 KM		14.500 KM		65
MCINTYRE LOOP	14.500 KM		17.200 KM		115

		EAST BOUND DOWN		WEST BOUND UP	
		Freight	Passenger	Freight	Passenger
MARIBYRNONG VIADUCT	17.200 KM - 18.100 KM SG MAIN LINE	40	40	40	40
MARIBYRNONG VIADUCT	17.200 KM - 18.100 KM BG MAIN LINE	20	20	20	20
#ON LOOP EXIT BOTH ENDS	16.000KM#				30
TULLAMARINE					
	24.380 KM		25.000 KM		95
	25.000 KM		26.200 KM		115
	26.200 KM		17.000 KM		80
	NOTE: 27 KM BECOMES 16 KM				
	17.000 KM		17.560 KM		115
SOMERTON LOOP#	19.380 KM				125 PASSENGER ONLY

21.270 KM	130 PASSENGER ONLY
25.660 KM	125 PASSENGER ONLY
26.020 KM	130 PASSENGER ONLY
* ON CURVES BETWEEN	
#MELBOURNE END LOOP EXIT	30

TOTTENHAM – LAVERTON

LINE SEGMENT	EXCEPTION TO MAXIMUM SPEEDS LOCATION	RESTRICTED SPEED
	17.218 KM* 17.130 KM	30
TOTTENHAM	17.130 KM* 16.100 KM	50
	16.100 KM* 11.030 KM	60
	11.030 KM* 10.484 KM	40
* SPEEDS APPLY FOR BOTH STANDARD AND BROAD MOVEMENT ON DUAL GAUGE TRACK		
NEWPORT	NOTE: KILOMETRES DECREASING FROM TOTTENHAM TO NEWPORT AND INCREASING FROM NEWPORT TO PYRENEES	
	10.700 KM 11.220 KM	40
	11.220 KM 12.120 KM	80



Issued By:

Richard Potts

Australian Rail Track Corporation