

SAFETY ALERT

ARTC NSW No. 11



Incident:

Pacific National freight service from Perth to Wollongong passes controlled signal at danger, Goulburn 9th November 2005.

Investigation findings:

The Sola gauge and superelevation measuring board may have contributed to the incident.

Tests have revealed that when the board is either laid or dropped on side and contact is made with both rails this board has the potential to return signals to stop (see photograph # 2).

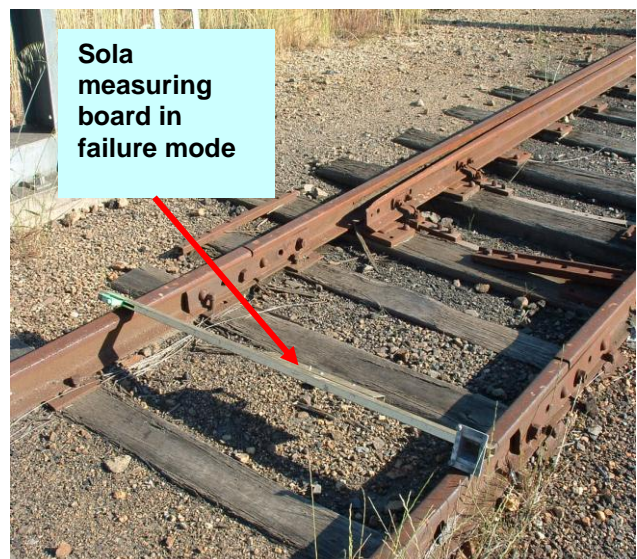
Controlled signals **will not** reset without the intervention of controlling signaller.

ACTION:

Track personnel to exercise more care when using the Sola measuring board to ensure incidents of this nature cannot occur.



Photograph # 1



Photograph # 2