

To All TEJV personnel and contractors.

A recent incident (Near Miss) occurred on a TEJV worksite, when a Hi-Rail Excavator (a Doosan Solar RRV) was operating in the rail corridor.

The RRV had been lifting material and was not on the rail tracks at the time of the incident. The RRV was required to change activities and attach a bucket for the task, using quick hitch process

While conducting this process the safety alarms finished notifying to the driver that the safety pins had engaged, no visual checks were conducted.

As the operator rolled the bucket at the work location the bucket fell from it's mounting from approximately 1.5m high landing in/on the centre of the track.

No personnel were injured and no damage was caused to the newly laid sleepers.

LORAC fitter attended the RRV to review the process of why the safety pins did not attach/lock into position, this was primarily due to the seating of the top pins in the quick hitch.

Incorrect

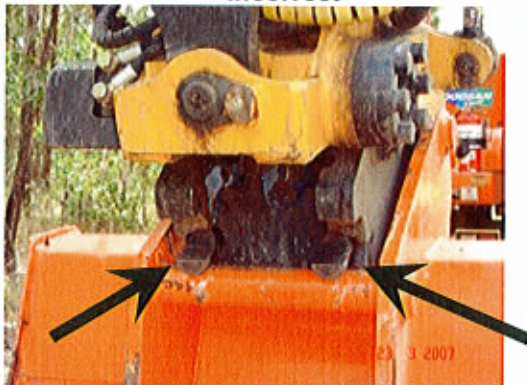


Photo 1 Bucket Incorrectly Installed

Correct



Photo 2 Bucket Correct Installed

The operator wrongly assumed the pins were in place.

Photo 1 shows the locking pins fully extended but over the top of the bucket hitch. The locking pins were able to be activated, indicate to the operator that all was OK.\

This type of quick hitch system is used by many various types of excavators and high rail machines.

Corrective and Preventive Action

All operators (prior to the using any quick hitch attachment) **MUST** ensure the locking pins are fixed in to the correct position.

- When attaching a bucket, the boom need to be folded until it is seated then lock the pins.
- Rotate the attachment so that the operator can visually check the pins are correctly installed
- Test the attachment is locked by, rolling the bucket or shaking the bucket close to the ground. or
- Visually inspect the attachment and check that the locking pins are correctly in place

Operators are never to assume that the alarm sounding has effectively connected to boom to the attachment.

Issued by
Clive Hunter
Program Safety Manager

