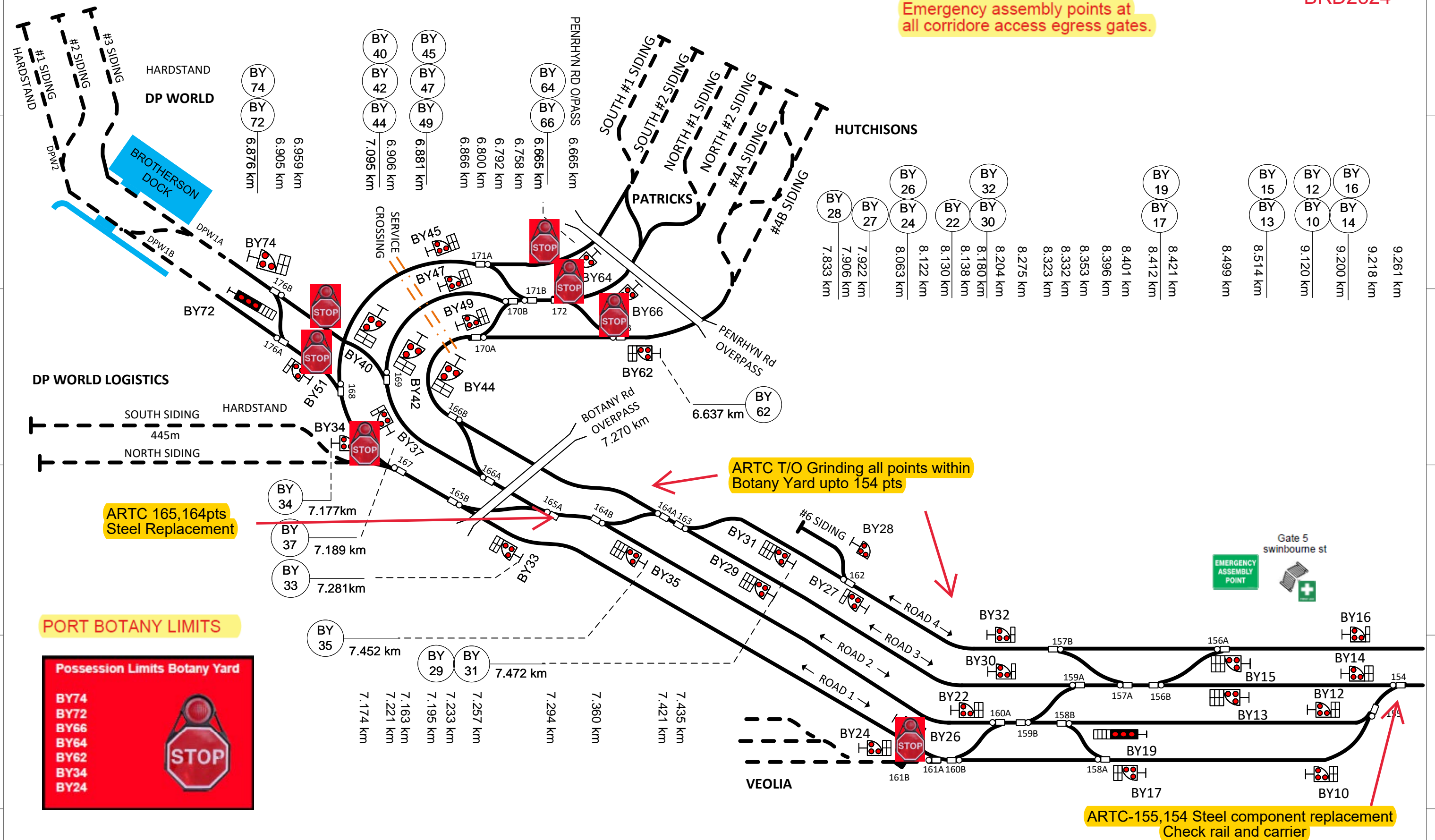


SYDNEY

BRD2324



ARTC T/O Grinding all points within Botany Yard upto 154 pts

ARTC 165,164pts  
Steel Replacement

## PORT BOTANY LIMITS

### Possession Limits Botany Yard

BY74  
BY72  
BY66  
BY64  
BY62  
BY34  
BY24



***This diagram must be used in conjunction with the corresponding Network Information Book containing the location specific information in Section 2 as well as the legend and general information in Section 1.***

[illegible]

ARTC

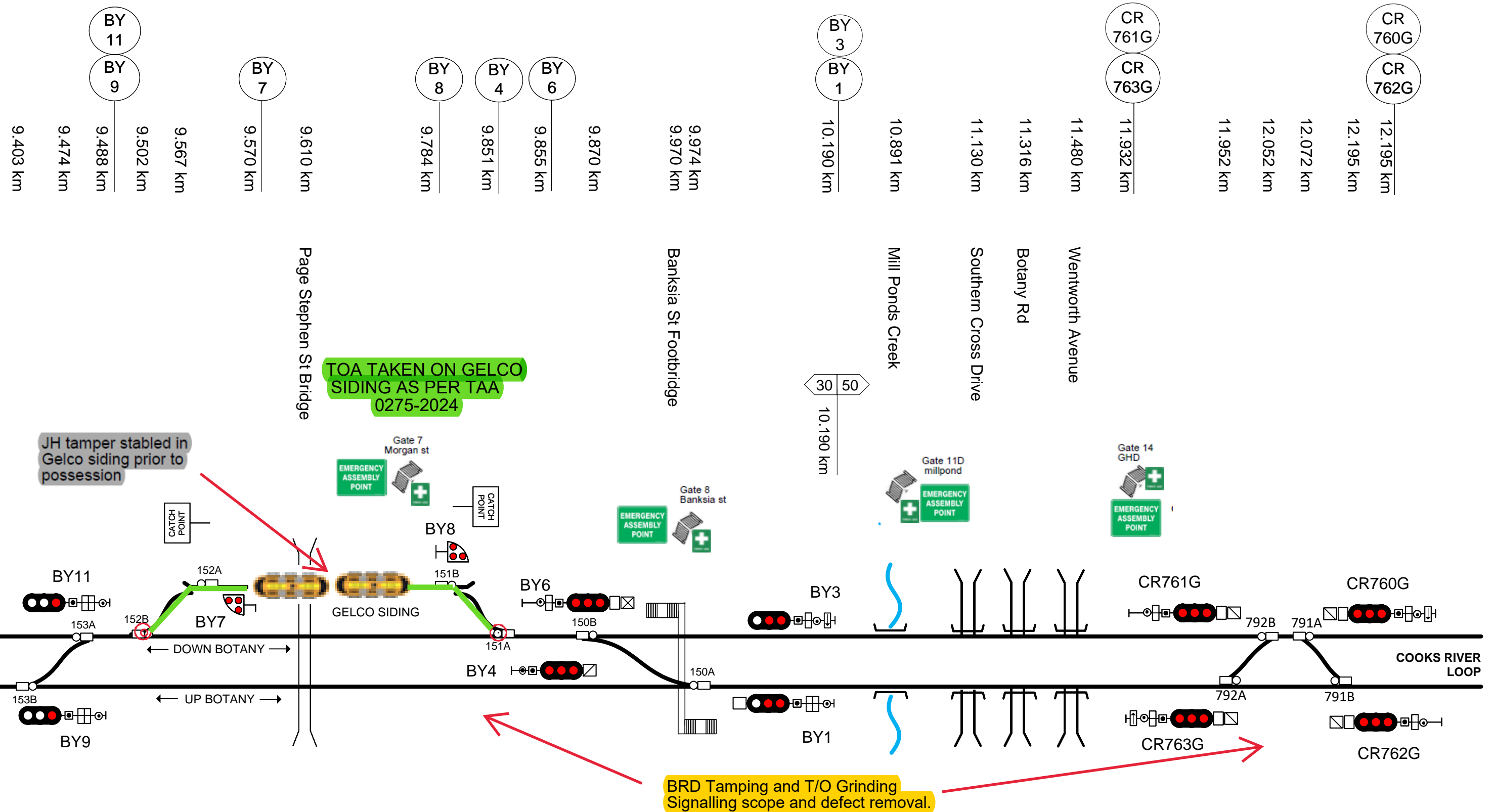
NIB-T0284

Sheet No	Sheet Size
1 of 2	A3
Scale	
NTS	

# PORT BOTANY 1

Emergency assembly points at all corridor access egress gates.

BRD2324



***This diagram must be used in conjunction with the corresponding Network Information Book containing the location specific information in Section 2 as well as the legend and general information in Section 1.***

[illegible]

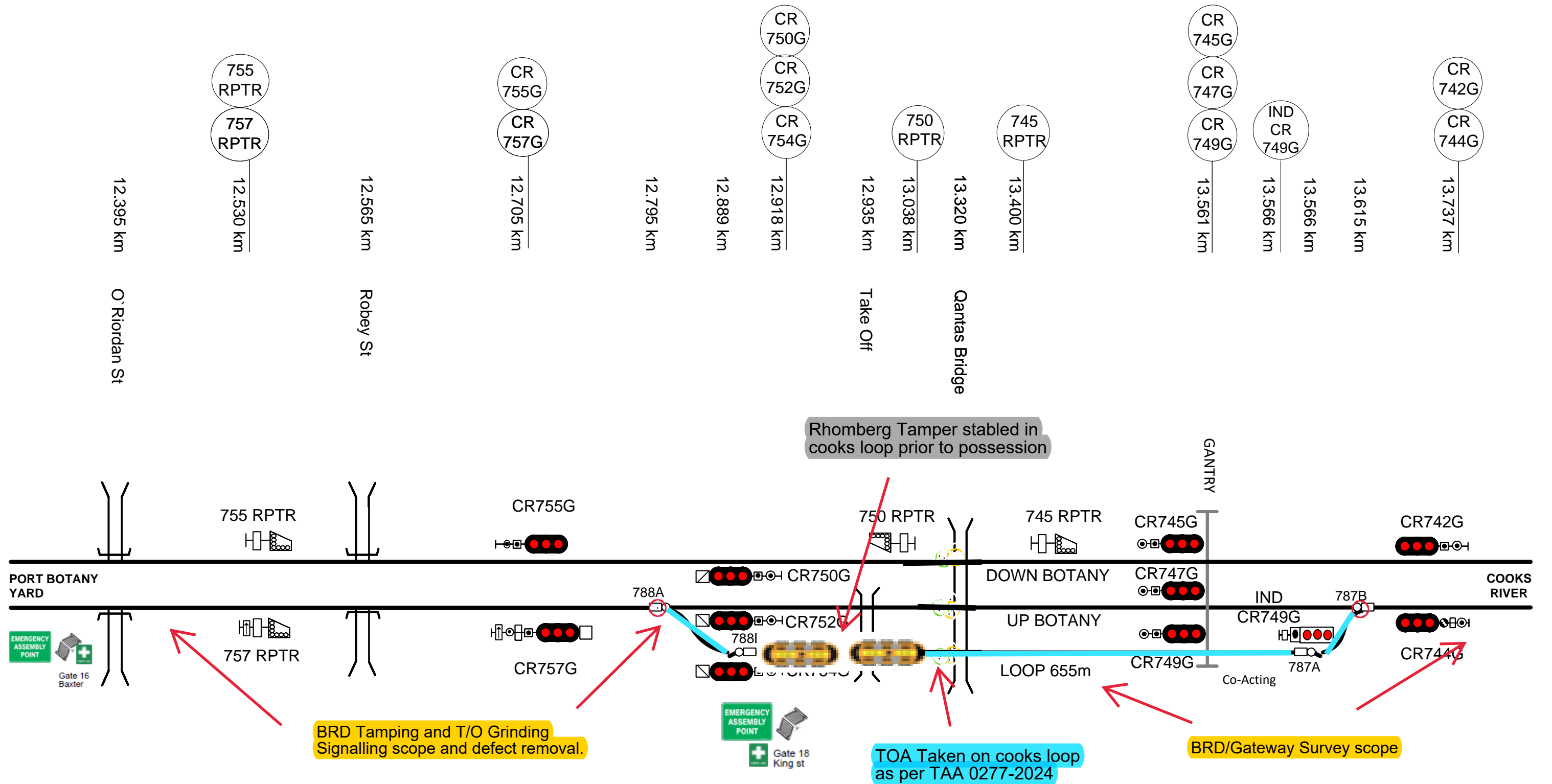
ARTC

NIB-T0285

Sheet No	Sheet Size
of 2	A3
Scale	

TITLE

## PORT BOTANY 2



***This diagram must be used in conjunction with the corresponding Network Information Book containing the location specific information in Section 2 as well as the legend and general information in Section 1.***

[illegible]

ARTC

NIB-T0287

Sheet No	Sheet Size
L of 1	A3
Scale	
NTS	

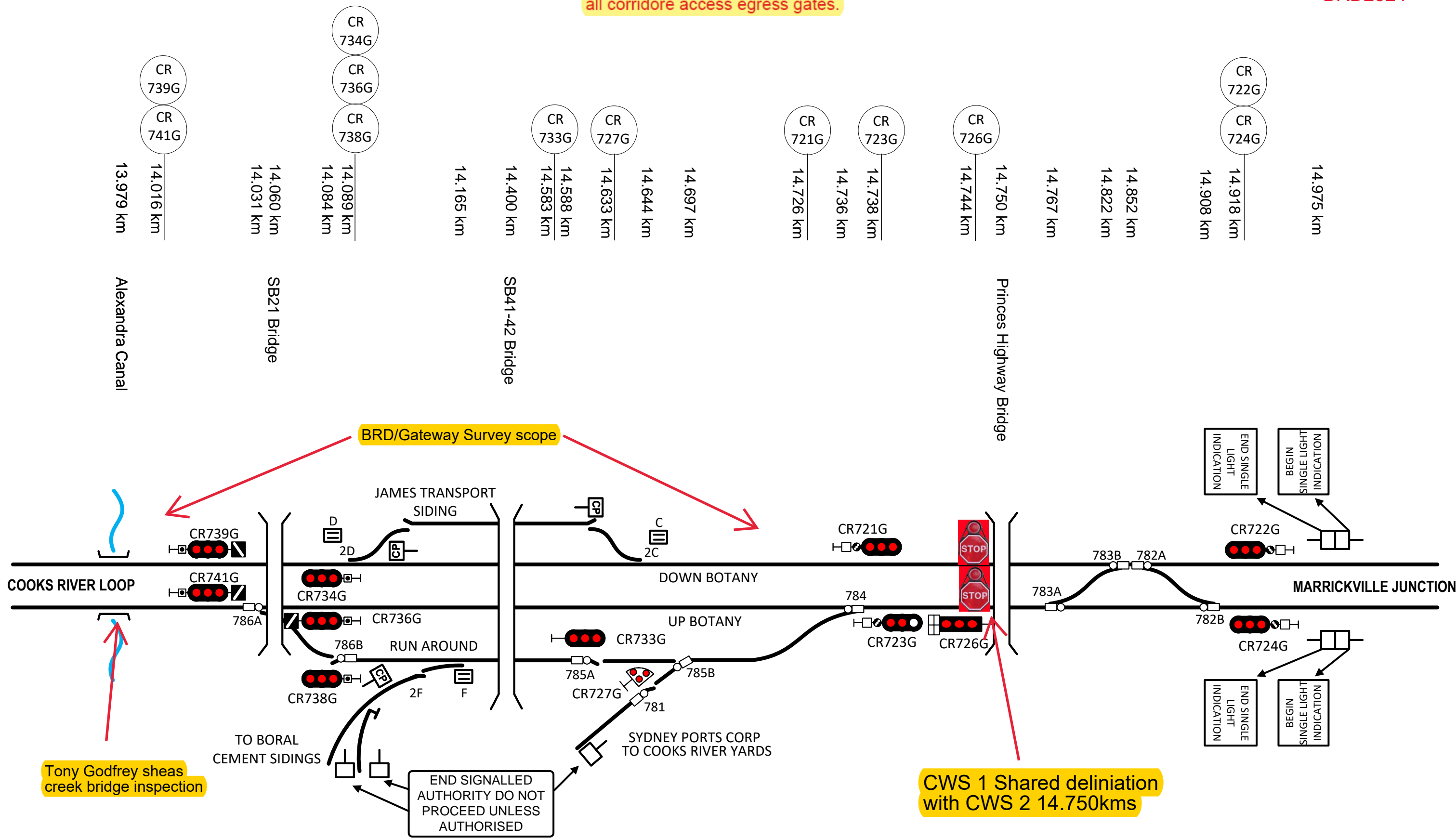
TITLE

## COOKS RIVER LOOP

SYDNEY

Emergency assembly points at all corridor access egress gates.

BRD2324



Tony Godfrey sheas creek bridge inspection

CWS 1 Shared deliniation with CWS 2 14.750kms

This diagram must be used in conjunction with the corresponding Network Information Book containing the location specific information in Section 2 as well as the legend and general information in Section 1.

Rev	Date	Revision Description	Designed	Checked	Ind. Rev.	Approved	Review Signature	Ind. Rev. Company	Ind. Rev. Name	Ind. Rev. Date	Acceptance Date
3	20/12/23	Signal CR726G corrected & Gateway bridges added						S KHAIJUI		2/09/2016	
2	25/1/19	Update km's from verification spreadsheet						J SPARROW		2/09/2016	
1	28/7/17	Boral Cement siding and Run Around road changes updated						ARTC	R RATH		

ARTC

NIB-T0288

TITLE

COOKS RIVER