

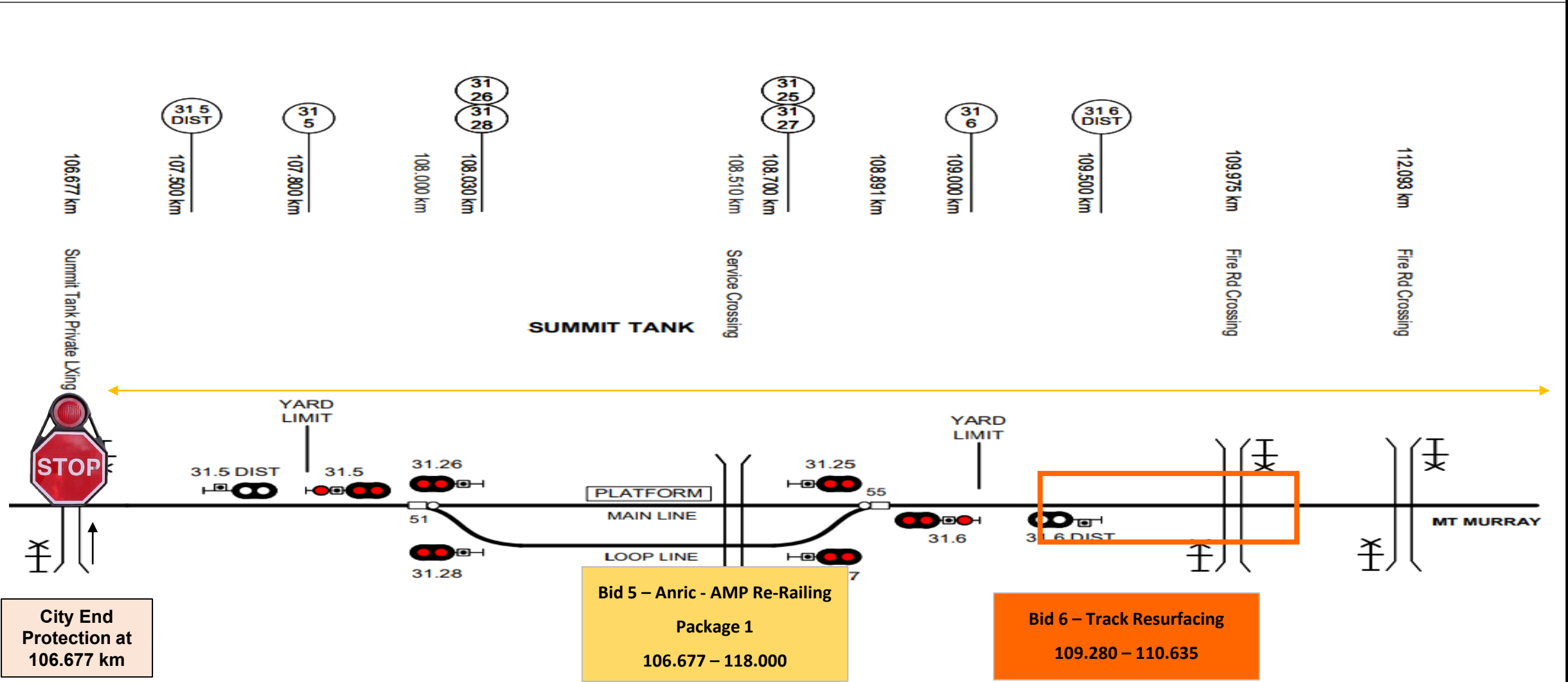
Coordinated Worksite 1 – Dombarton to Robertson

- **CWS 1 will operate Continuous 1600, Friday 31st May – 1000 Monday 3rd June 2024: Bid 5 (AMP Re-Railing) will be responsible for implementation & management of worksite protection within CWS 1.**
- **Worksites within CWS 1 are:**
 - **Bid No. 5 Anric - AMP Re-Railing Package 1**
 - **Bid No. 6 Track Resurfacing**
 - **Bid No. 7 Vertex - AMP Rerailing Package 2**
 - **Bid No. 8 Slip Detector Comms Hut Works**
- **Protection limits: 106.677 – 126.688 KM**
- **CPO 1600 – 0400: Levi Muaulu - 0402 311 050**
- **CPO 0400 – 1600: Lynette Stevens - 0404 000 148**

WE49 Worksite Communication Plan

Coordinated Worksite 1 – Dombarton to Robertson

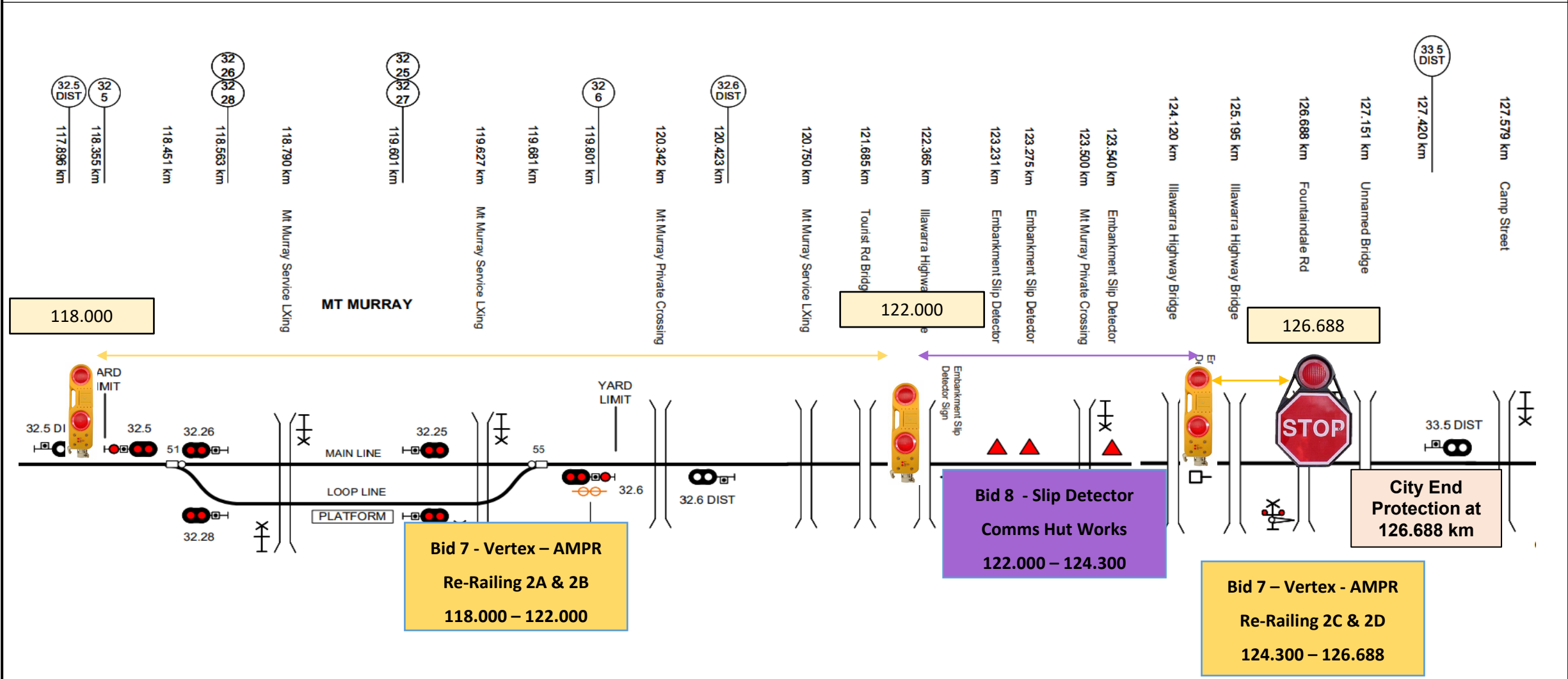
CWS 1 Protection Plan



WE49 Worksite Communication Plan

Coordinated Worksite 1 – Dombarton to Robertson

CWS 1 Protection Plan



CSW Site 1 Contact Details:**Bid 5 - Anric - AMP Re-Railing Package 1 (106.677 – 118.000 KM)**

- Site Supervisor: Nights 1600 - 0400: Wisey Matakibau 0491 304 972 / Days 0400 – 1600 Pete Hemming 0413 995 150
- Protection Officer: Nights 1600 - 0400: John Murray 0410 135 353 / Days 0400 – 1600 Brian Frary 0429 935 006

Bid 6 – Track Resurfacing (109.280 – 110.635 KM)

- Site Supervisor: Kale Stanton - 0401 855 381
- Protection Officer: Vince Costantino - 0408 890 612

Bid 7 - Vertex - AMP Re-Railing Package 2 (118.000 – 122.000 KM / 124.300 – 126.688 KM)

- Site Supervisor: Drew Little 0419 408 533

Protection Officer Days - 0600 - 1800

- 118.000 – 122.000 KM (2A & 2B) Days 0600 – 1800 : Drew Paton 0409 833 066
- 124.300 – 126.688 KM (2C & 2D) Days 0600 – 1800: Glenn Charles - 0412 155 313

Protection Officer Nights - 1800 - 0600

- 118.000 – 122.000 KM (2A & 2B) Nights 1800 - 0600: Robert Certaro 0412 464 774
- 124.300 – 126.688 KM (2C & 2D) Nights 1800 - 0600: Michael O'Donnell 0428 433 861

Bid 8 - Slip Detector Comms Hut Works (122.000 – 124.300 KM)

- Site Supervisor: Gary Docherty 0488 318 273
- Protection Officer: Taulia Ulae 0421 179 230

Assets for use in diagrams

